

Trail Segments (distances approximate)

Bennetts Pond to Rt. 7.....6 miles
Rt. 7 to Tarrywile Park / Ives House5 miles
Tarrywile Park to Long Ridge Road.....5 miles
Long Ridge Road to Side Cut Road4 miles

Parking

Parking for trailhead access is indicated on the map on the reverse side with a 'P' and an arrow pointing to the parking area. References such as 'C6' refer to the grids on the map.

Bennetts PondC6
Pine Mountain RoadA4
Rt. 7, west sideC4
Rt. 7, east side.....D3
Tarrywile Park.....E1
Near West Redding Train Station..... F6

How Can I Contribute ?

- By joining the Ives Trail and Greenway Regional Association (ITGRA). To join, send a check for annual membership dues made out to ITGRA for \$20 (individual membership) or \$40 (family membership) to:

ITGRA, c/o Tarrywile Park
70 Southern Boulevard
Danbury, CT 06810
- By volunteering with trail building, marking, and other maintenance tasks. To volunteer, send an email to the ITGRA members at ivestrl@yahoo.com.

501(c)(3) status for the Ives Trail and Greenway Regional Association is pending. Membership dues and other contributions may be tax deductible.

Contact Information

To contact members of the Ives Trail and Greenway Regional Association, send email to:

ivestrl@yahoo.com

For additional information on the Ives Trail and Greenway, see the IT&G web page at:

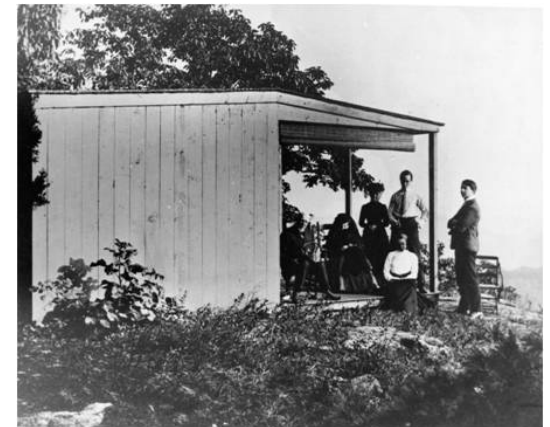
www.hvceo.org/ivestrail.php

A Brief History of the Ives Trail and Greenway

In early 2003 Danbury City Planner Dennis Elpern recognized the potential for connecting approximately 3,000 acres of undeveloped and/or open space areas running through Ridgefield, Danbury, Bethel and Redding, and recommended the Mayor pursue the formation of a continuous trail and greenway connecting these lands. If it could be built, it was decided to name the trail after one of America's most influential composers and Danbury native Charles Ives (1874-1954). In June 2003 Danbury Mayor Mark Boughton appointed the Ives Trail Task Force (ITTF), including representatives of Ridgefield, Danbury, Bethel and Redding. The ITTF met monthly for 10 years, and with the cooperation of the local towns and residents, secured the final easements needed to complete the trail in fall 2012, with construction of the final trail segments completed in spring 2013. In 2010, when the majority of the trail and greenway had been established, the CT Department of Energy and Environmental Protection recognized the Ives Trail and Greenway as one of Connecticut's officially designated greenways.



A 20-mile hiking trail and greenway connecting Ridgefield, Danbury, Bethel and Redding



Charles Ives and friends relax at a lean-to at the Pine Mountain lookout, c. 1905.

The Ives Trail and Greenway

0 Feet 1000
0 Meters 300

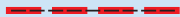

Map Scale: 1 : 30,000
Grid Interval: 1000 meters

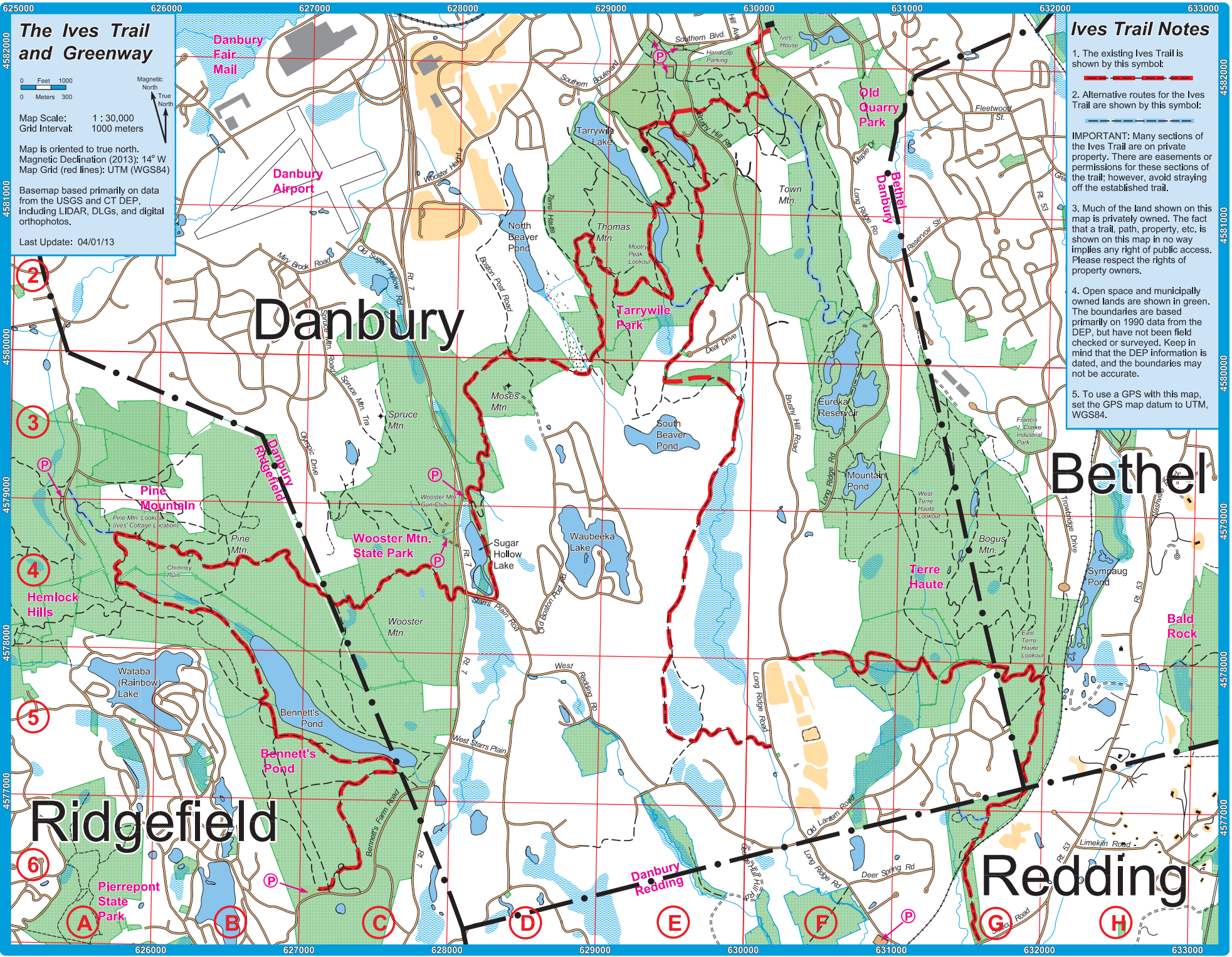
Map is oriented to true north.
Magnetic Declination (2013): 14° W
Map Grid (red lines): UTM (WGS84)

Basemap based primarily on data from the USGS and CT DEP, including LIDAR, DLGs, and digital orthophotos.

Last Update: 04/01/13

Ives Trail Notes

- The existing Ives Trail is shown by this symbol:

 - Alternative routes for the Ives Trail are shown by this symbol:

- IMPORTANT:** Many sections of the Ives Trail are on private property. There are easements or permissions for these sections of the trail; however, avoid straying off the established trail.
- Much of the land shown on this map is privately owned. The fact that a trail, path, property, etc. is shown on this map in no way implies any right of public access. Please respect the rights of property owners.
 - Open space and municipally owned lands are shown in green. The boundaries are based primarily on 1990 data from the DEP, but have not been field checked or surveyed. Keep in mind that the DEP information is dated, and the boundaries may not be accurate.
 - To use a GPS with this map, set the GPS map datum to UTM, WGS84.



Danbury

Bethel

Ridgefield

Redding

(2)
(3)
(4)
(5)
(6)
(A)
(B)
(C)
(D)
(E)
(F)
(G)
(H)