



Regional GIS Resources

REGIONAL WEB GIS PORTAL AND REGIONAL DATA SETS

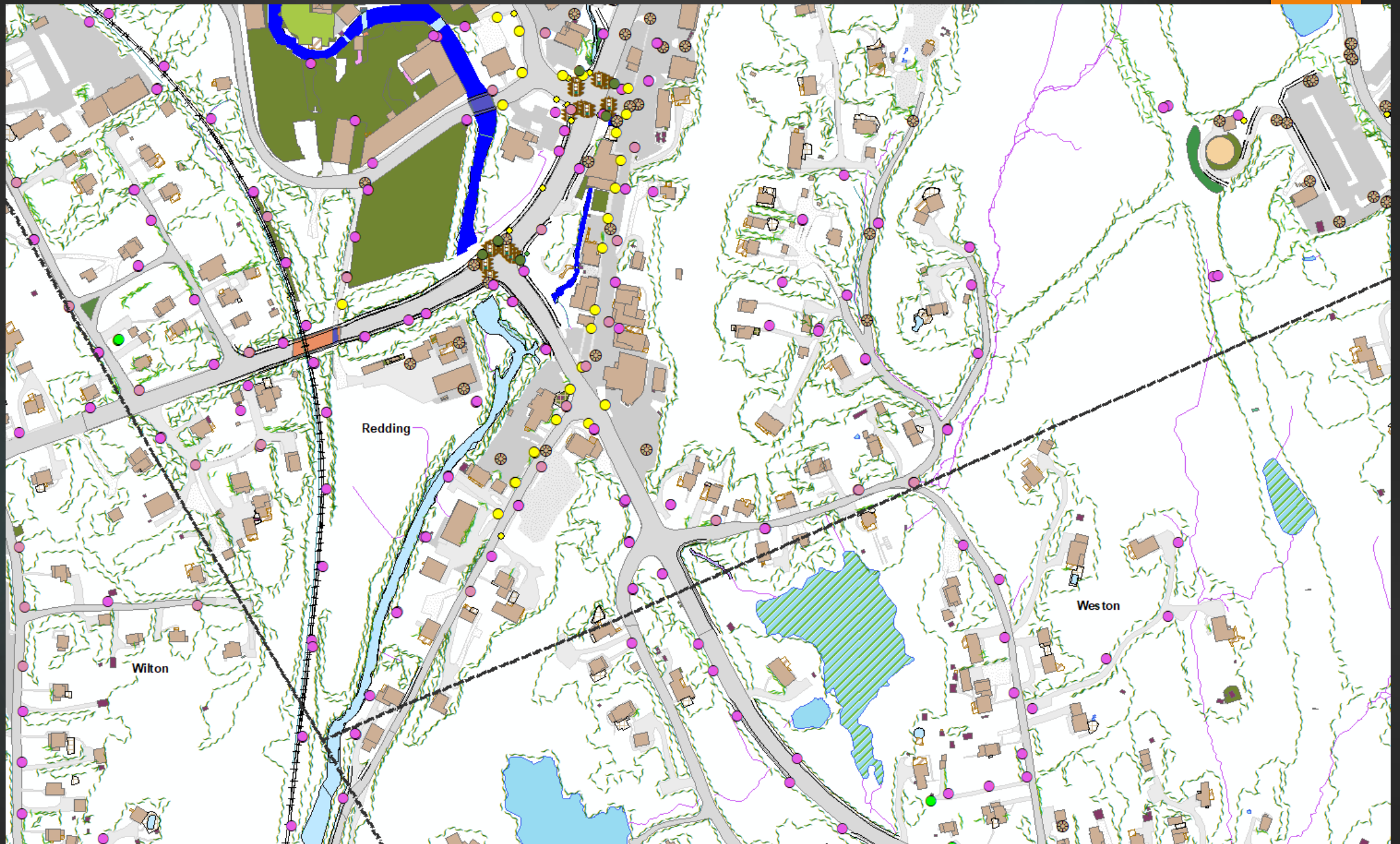
Michael Sullivan
msullivan@westcog.org

Web GIS Portal

- ▶ Regional Base maps:
 - ▶ Transportation
 - ▶ Environmental
 - ▶ Emergency Services
 - ▶ Physical Infrastructure
 - ▶ Public Services & Utilities

<https://westcog-gis.org>

- Feature Layers
 - Layers for regional data sets
 - Can be added to existing or new maps
 - Additional utility and flexibility



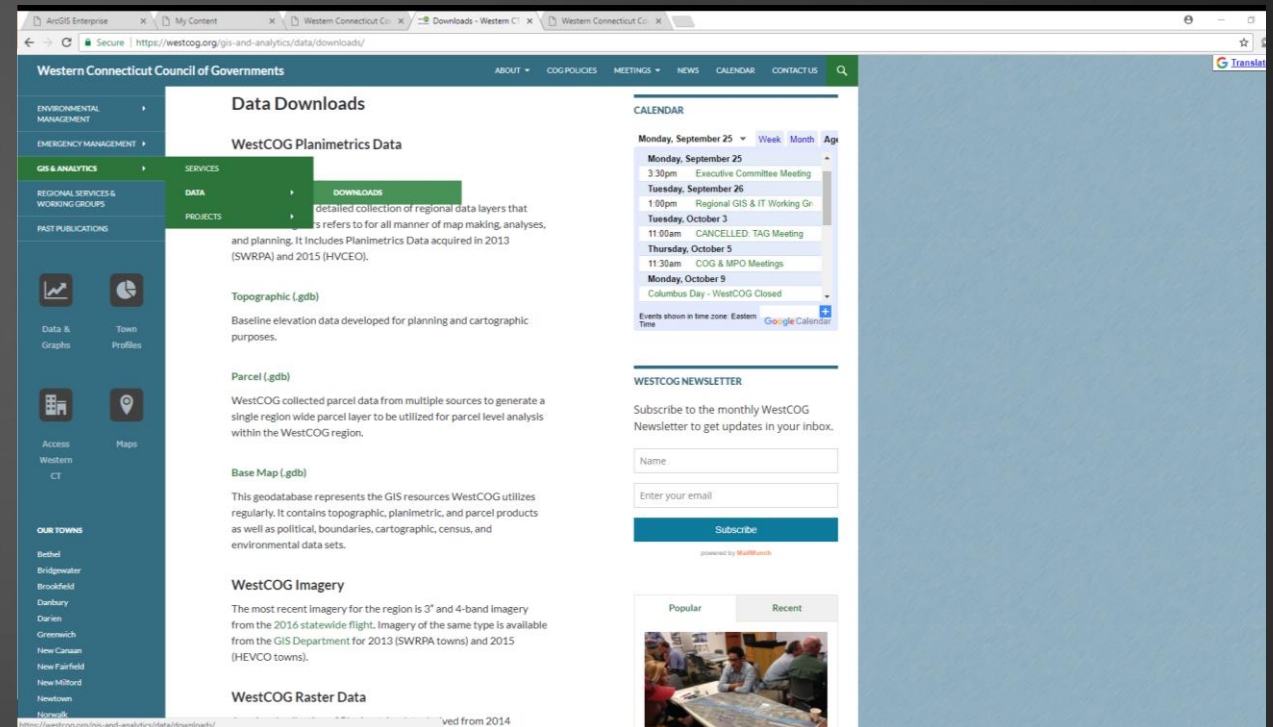
Regional GIS Data Sets

- ▶ Planimetrics data sets (Over 3 million features)
 - ▶ Building footprints, street pavement (including driveways), vegetation, waterbodies, storm water infrastructure, poles and street furniture, recreation areas
- ▶ Imagery & Elevation:
 - ▶ State wide flyover (CT ECO 2016), SWRMPO (2013), HVMPO (2015)
 - ▶ DEM, SEM, Contours & LIDAR

Data Downloads

► Data available at WestCOG website:

- Planimetrics
- Topographic
- Parcel
- Base Map
- Imagery
- DEM & SEM



The screenshot shows the 'Data Downloads' page on the WestCOG website. The page is titled 'Data Downloads' and features a sidebar with navigation links: ENVIRONMENTAL MANAGEMENT, EMERGENCY MANAGEMENT, GIS & ANALYTICS (selected), REGIONAL SERVICES & WORKING GROUPS, and PAST PUBLICATIONS. The main content area is divided into sections for 'WestCOG Planimetrics Data', 'Topographic (.gdb)', 'Parcel (.gdb)', 'Base Map (.gdb)', 'WestCOG Imagery', and 'WestCOG Raster Data'. Each section provides a brief description of the data. On the right side, there is a 'CALENDAR' section showing events for September and October, and a 'WESTCOG NEWSLETTER' subscription form with fields for Name and Email, and a 'Subscribe' button. The bottom of the page shows a 'Popular' and 'Recent' section with a thumbnail image of a group of people.

<https://westcog.org/gis-and-analytics/data/downloads/>

Future Developments

- ▶ Municipal Base maps
 - ▶ Built with regional data and additional resources from town stakeholders
 - ▶ Enable local stakeholders to work with data and contribute to evolving resource to highlight projects
- ▶ WestCOG Regional Projects
 - ▶ Publish web map content to support corresponding projects (TIP, MS4)
- ▶ Public commenting and user interaction
 - ▶ Enhance ability for stakeholders to participate in building stronger web resources

TRANSPORTATION ▸

ECONOMIC DEVELOPMENT ▸

ENVIRONMENTAL
MANAGEMENT ▸

EMERGENCY MANAGEMENT ▸

GIS & ANALYTICS ▸

REGIONAL SERVICES &
WORKING GROUPS

PAST PUBLICATIONS

Data &
GraphsTown
ProfilesAccess
Western
CT

Maps

OUR TOWNS

Bethel

Bridgewater

Brookfield

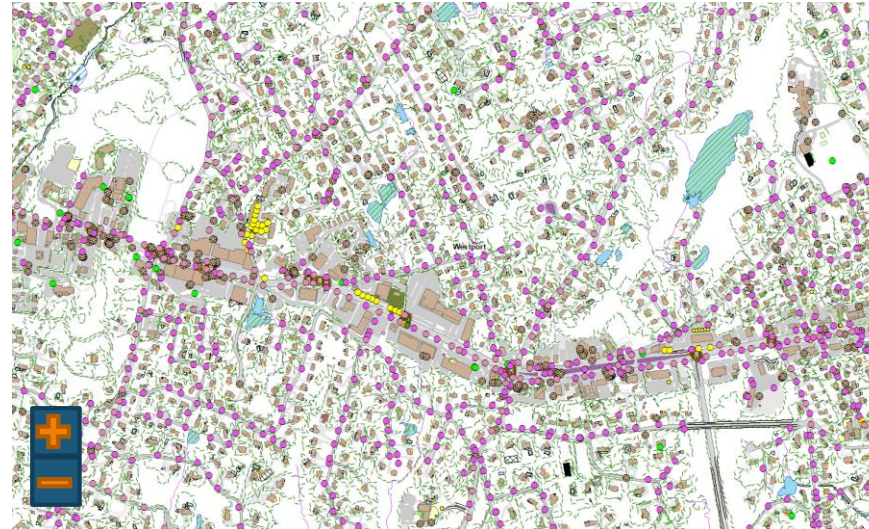
Danbury

Darien

Greenwich

New Canaan

Town of Westport



CALENDAR

Monday, September 25 ▾ Week Month Agenda

Monday, September 25

3:30pm Executive Committee Meeting

Tuesday, September 26

1:00pm Regional GIS & IT Working Gr

Tuesday, October 3

11:00am CANCELLED: TAG Meeting

Thursday, October 5

11:30am COG & MPO Meetings

Monday, October 9

Columbus Day - WestCOG Closed

Events shown in time zone: Eastern
Time

Google Calendar

WESTCOG NEWSLETTER

Subscribe to the monthly WestCOG
Newsletter to get updates in your inbox.

Subscribe

powered by MailMunch

Popular

Recent



Stakeholder Engagement & Involvement

- ▶ Build webpages and portal attributes which fit municipal work and goals
- ▶ Engage municipal staff and regional GIS users in development of webpages and tools which promote their efforts
- ▶ Create initial webpages and products
 - ▶ Take in user feedback
 - ▶ Improve webpages to better meet needs