

2020 Census Participant Statistical Areas Program (PSAP)

WestCOG Census 2020 Update process

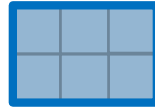
Participant Statistical Areas Program (PSAP)

- **Goal:** to improve census data analysis and visualization.
- An opportunity to redesign the census boundaries to determine who gets counted where.
- Census Boundaries include blocks, block groups, tracts and census designated places (CDP).

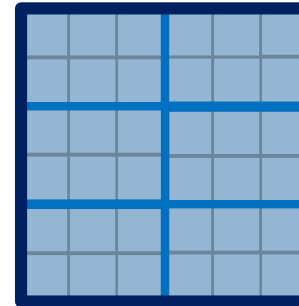
block



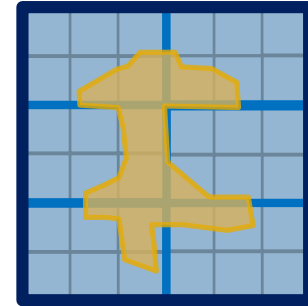
block group



tract



CDP



- Program open January 25th - May 25th

TOPICS

01

Census
Designated
Places (CDP)

02

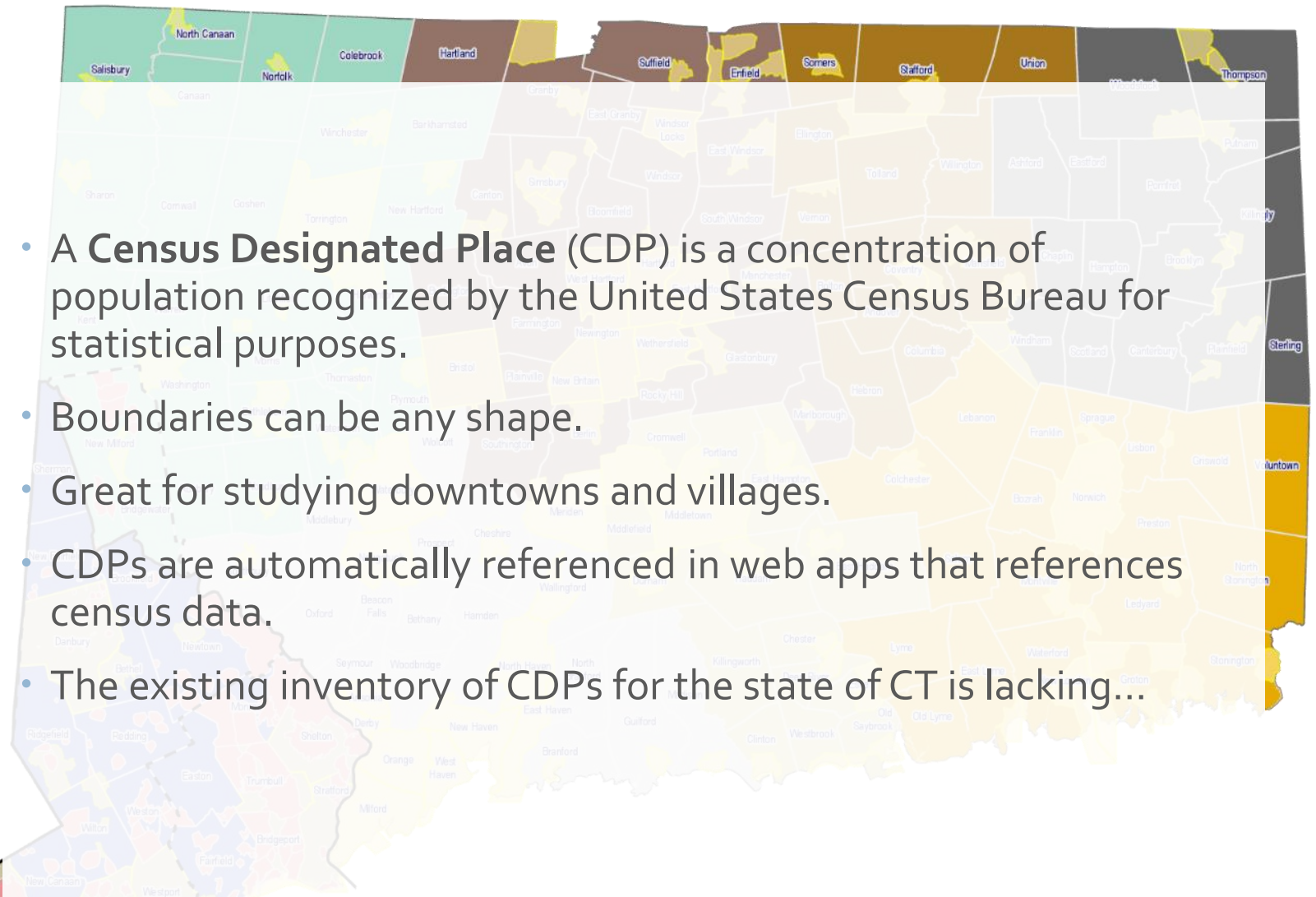
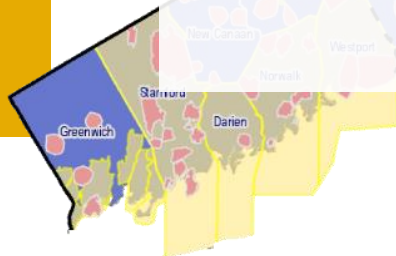
Special Use
Boundaries:
Tracts & Block
Groups

03

Standard
Boundary
Delineation

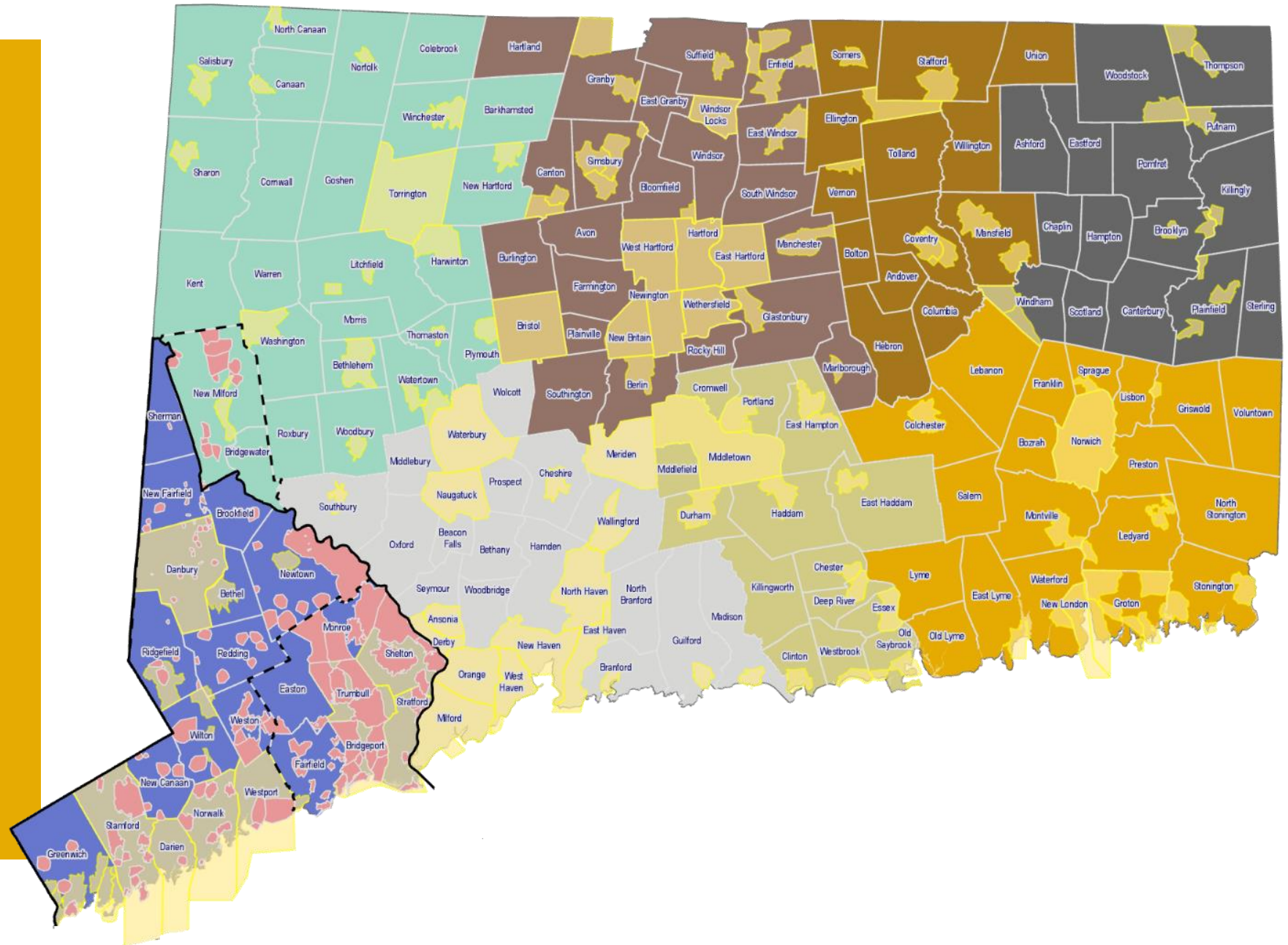
Census Designated Places (CDP)

- A **Census Designated Place (CDP)** is a concentration of population recognized by the United States Census Bureau for statistical purposes.
- Boundaries can be any shape.
- Great for studying downtowns and villages.
- CDPs are automatically referenced in web apps that references census data.
- The existing inventory of CDPs for the state of CT is lacking...



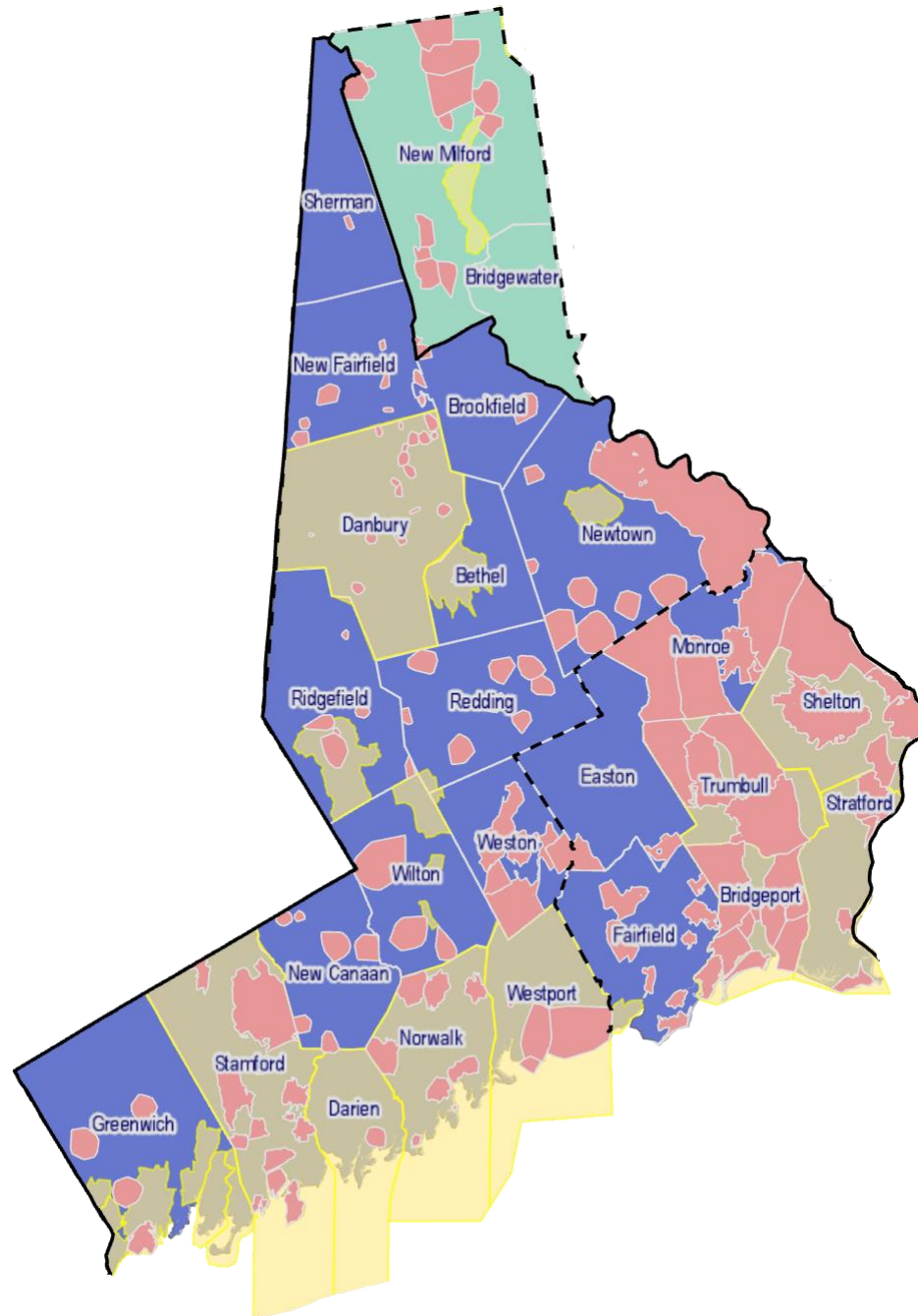
Census Designated Places (CDP)

- Old boundaries are outdated and do not provide a sense of place.
- New boundaries allow for customized tabulation of data.



Census Designated Places (CDP)

- Some old boundaries include town wide CDPs. This is redundant.
- New boundaries are compiled from Maps of Antiquity, Open street maps, and National Register of Historic Districts & Homes



Boundaries need to be further refined. We seek municipal input to improve CDPs.

Pictured:
WestCOG and
Fairfield County

Special Use Block Groups & Tracts

- These are boundaries that include places which manipulates data analysis and visualization

I. Large natural features

Often impact density statistics and visually expand a block group or tract.

- *Parks*
- *Lakes*



II. Outliers of socioeconomic information.

These locations contain high and low data on income, jobs, household, age and throw off, neighboring households.

- *Malls / shopping centers*
- *Hospitals*
- *Prisons*
- *Higher education centers (colleges)*

Standard Boundary Delineation

- The remaining block groups and tracts are also under review.
- Does a block group have a standard shape and how consistent is land use within that boundary?
- CTDOT is also reviewing these boundaries. They want them to be usable for traffic modeling.
- WestCOG is looking into the feasibility for this review.



Thank you!

Nick Trabka

GIS Analyst, Western Connecticut Council of Governments
tel/fax 475-323-2061 · ntrabka@westcog.org

web westcog.org · post 1 Riverside Road, Sandy Hook, CT 06482

Mike Towle

GIS Manager, Western Connecticut Council of Governments
tel/fax 475-323-2064 · mtowle@westcog.org

web westcog.org · post 1 Riverside Road, Sandy Hook, CT 06482

Special Use Block Groups & Tracts

Census Tract Thresholds

Census Tract Types	Description	Population Thresholds	Housing Unit Thresholds	Area Measurement Thresholds	Employment Threshold
Standard Census Tract	Small statistical subdivisions of counties; emphasis on comparability over time to facilitate longitudinal analysis.	Optimum: 4,000 Min: 1,200 Max: 8,000	Optimum: 1,600 Min: 480 Max: 3,200	None	NA
Special Use Census Tract	A census tract encompassing an employment center, large airport, public park, public forest, or large water body with no (or very little) population or housing units.	None (or very little) or within the standard census tract threshold	None (or very little) or within the standard census tract threshold	At least comparable in size to surrounding standard census tracts	Suggested minimum of 1,200 workers or jobs when encompassing employment centers.

Block Group – Thresholds

Block Group Types	Description	Population Thresholds	Housing Unit Thresholds	Area Measurement Thresholds	Employment Threshold
Standard Block Groups	Subdivisions of census tracts; smallest geographic area for which ACS data are tabulated and disseminated.	Min: 600 Max: 3,000	Min: 240 Max: 1,200	None	NA
Special Use Block Groups	A block group, usually coextensive with a special use census tract, encompassing an employment center, large airport, public park, public forest, or large water body with no (or very little) population or housing units.	None (or very little) or within the standard block group thresholds	None (or very little) or within the standard block group thresholds	At least comparable in size to surrounding standard block groups	Suggested minimum of 600 workers or jobs.