

WESTERN CONNECTICUT COUNCIL OF GOVERNMENTS

Traffic Calming and Complete Streets Best Practices Toolbox

Focus Group

June 16, 2025



Introductions

- Introductions and Ice Breaker:
 - Name
 - Role or Representing...
- Thinking back to your younger days (i.e., middle school-aged), **what is your favorite memory of getting around?**



Focus Group

Online Recommendations

- We want you to do the talking! Please feel free to unmute throughout and use the chat if preferable
- Speaking one at a time can be challenging – ‘raise hands’



Focus Group

- Notes will be de-identified and anonymized
- Summary will be distributed for your review (tomorrow)
- Referrals and references are appreciated!

THANK YOU for sharing your Monday afternoon with us.



Traffic Calming & Complete Streets

Traffic Calming 101

Project Background



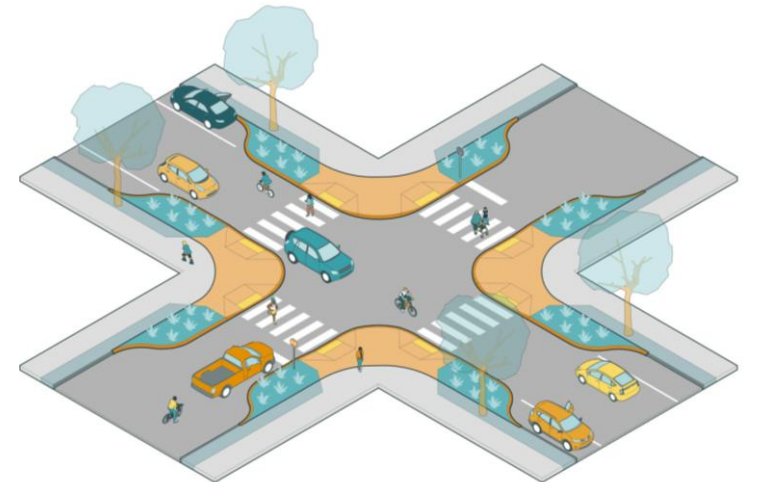
PROJECT BACKGROUND

Purpose of the Toolbox

The Traffic Calming and Complete Streets Best Practices Toolbox will provide planning precepts and design principles for local and residential roads.

This Toolbox will:

- Reflect best practices and updated guidance
- Provide traffic calming treatment and features
- Be an alternative to the HDM



Project Tasks

Task 1: Project Management

- Ongoing Project Management, Reports, and Meetings

Task 2: Regional Status Quo

- Research and review of Municipal guidance, manuals, and other resources
- Technical Memo

Task 3: Best Practices

- Best Practices in Traffic Calming and Complete Streets
- Emergency Services Focus Groups & Considerations
- Applicability to WestCOG Region

Task 4: Best Practices and Precepts Toolbox

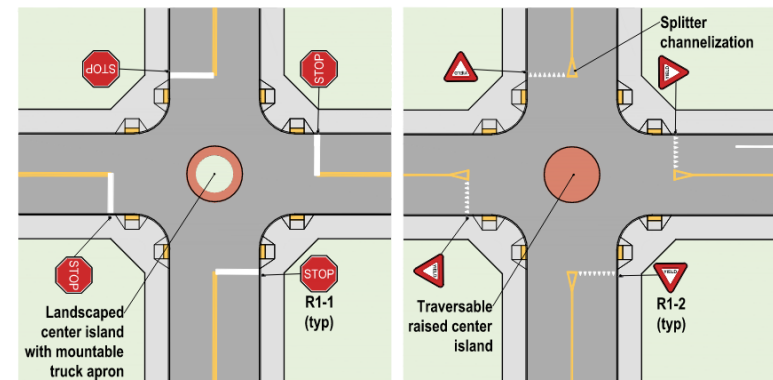
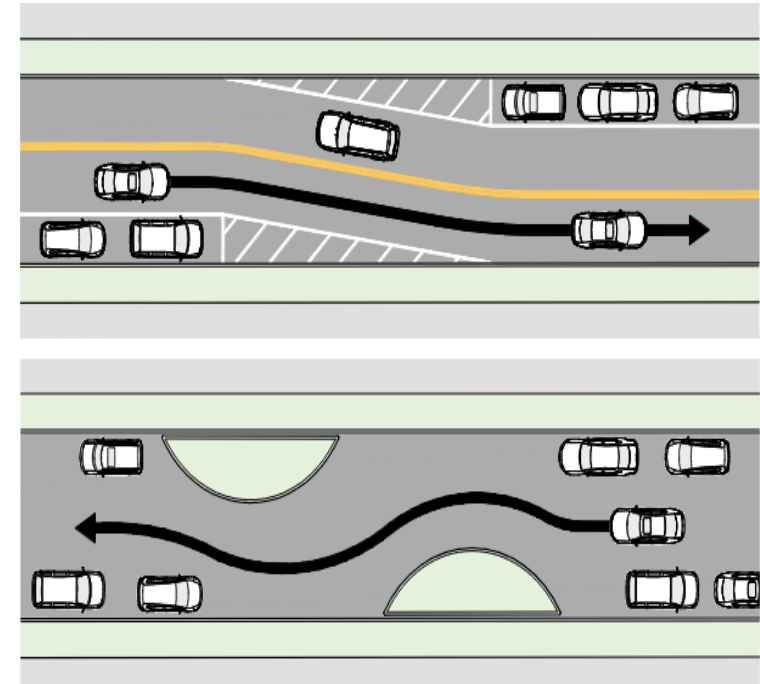
- Planning Precepts (Round 1 and Round 2)
- Draft and Final Toolbox

What is Traffic Calming?

A combination of mainly physical measures that:

- reduce the negative effects of motor vehicle use;
- alter motorist behavior;
- improve conditions for non-motorized street users.

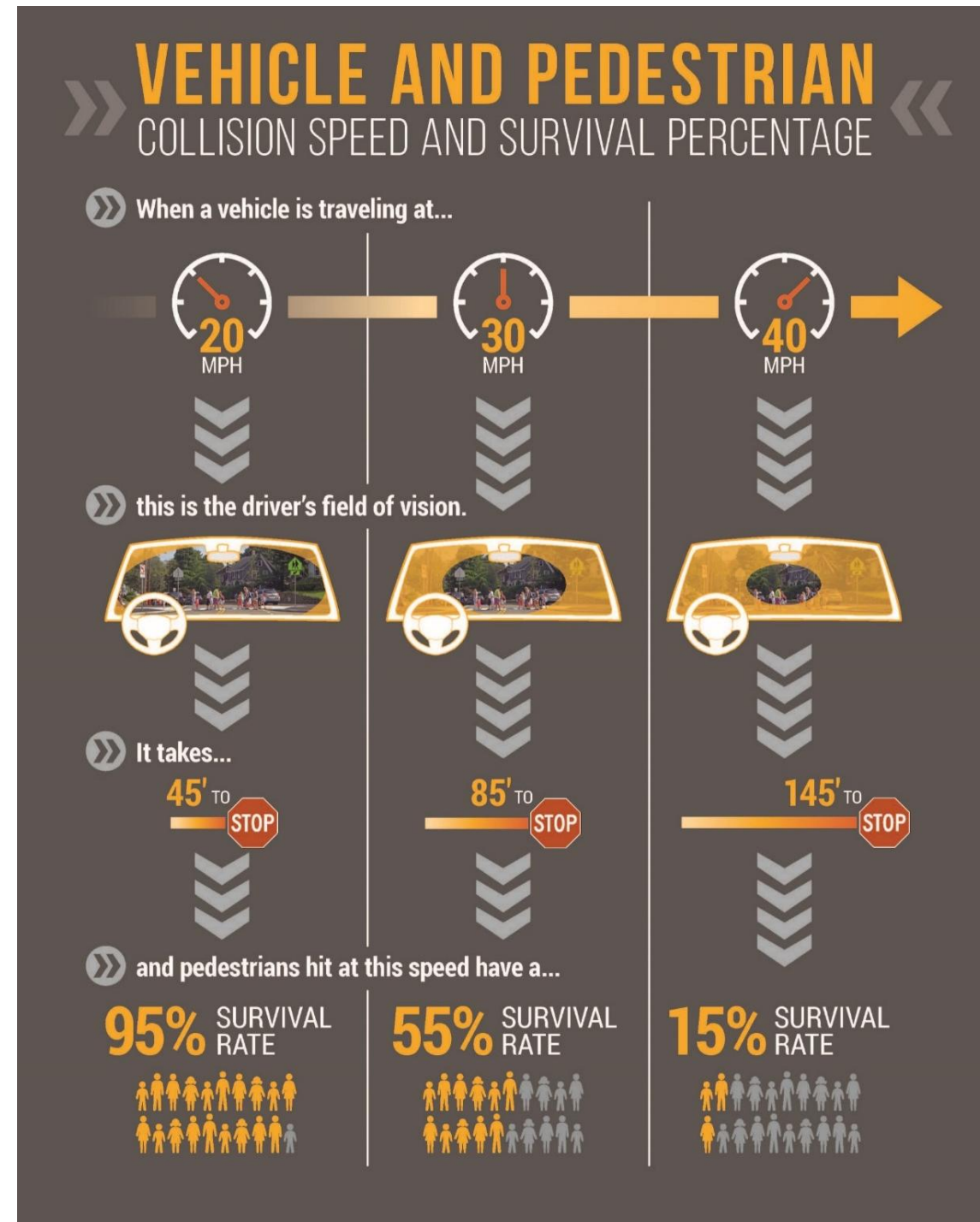
ITE Traffic Calming: State of the Practice (1999)



Speed and Safety

In Connecticut, excessive speed was a factor in more than **25% of fatalities**, with **60%** of speeding-related fatalities on roadways with posted speeds under 40MPH.

Source: 2021 Connecticut Highway Safety Office



Focus on Local Streets: Priorities

1. Self-enforcing designs
2. Reduce motorist speed to the desired operating speed as consistently as possible through a corridor
3. Avoid unintentionally diverting motorists to parallel routes



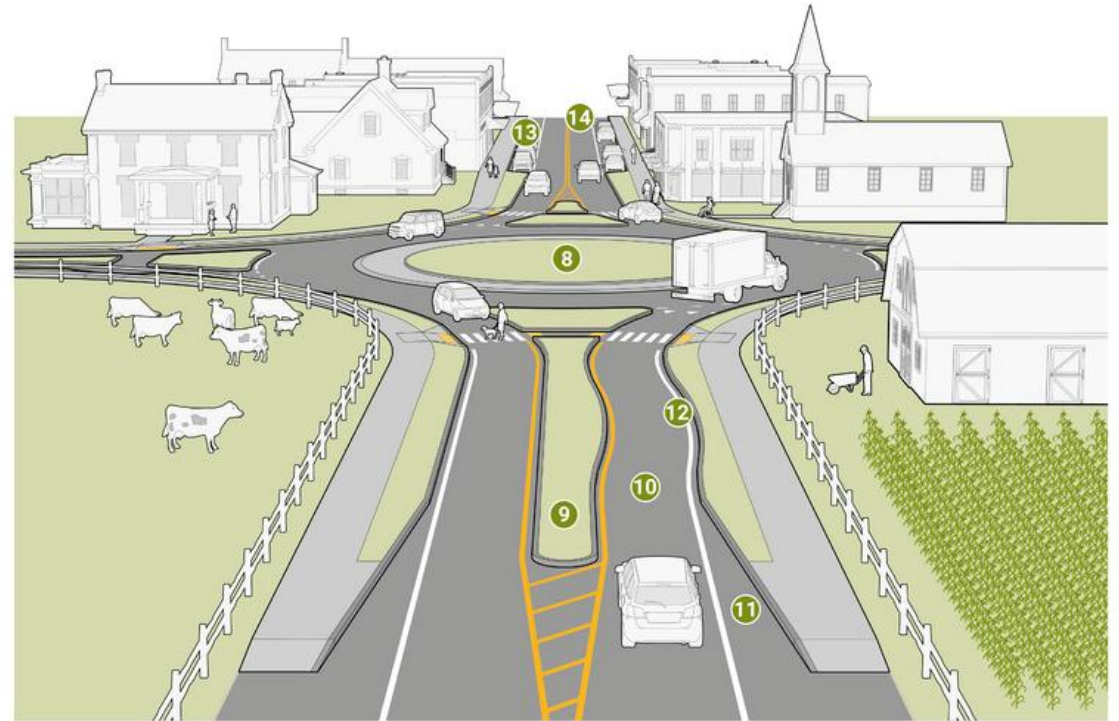
Focus on Transition Zones and Gateways

- Alert drivers to change in the environment and character
- Gradual reduction in speed

Approach: Warning and psychological (signs, VMS, pavement color)

Transition Zone: Physical devices

Gateways: Define new environment



8. Raised Medians
9. Reduced Lane Width
10. Shoulder Removal

11. Curbline
12. Tall Vegetation, Street Trees, other Landscaping

**We want to hear
from you!**

Some designs...

Vertical Treatments



Speed Humps, Tables, Cushions



Raised Crossings, Intersections

Horizontal Treatments



Chicanes and Horizontal Shifts

Horizontal Treatments / Intersections



Traffic Circles, Roundabouts, Mini Roundabouts

Gateways / Intersections



Curb Extensions / Bump outs



Pinchpoints

Creating a Sense of Enclosure



Median Treatments



No center lane markings, Yield Streets

Lane Reconfiguration



Narrowing the Roadway

Lane reconfiguration

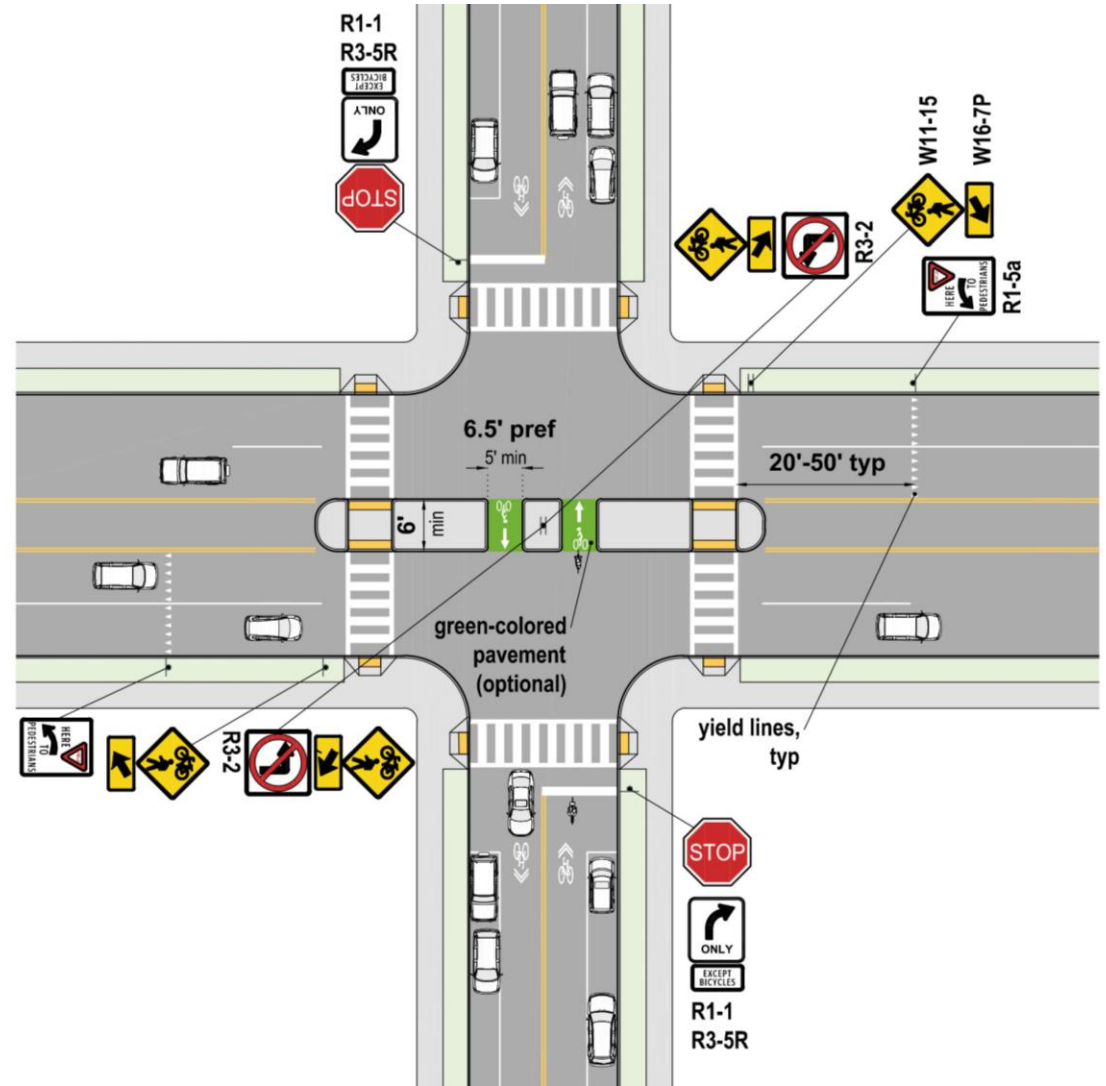
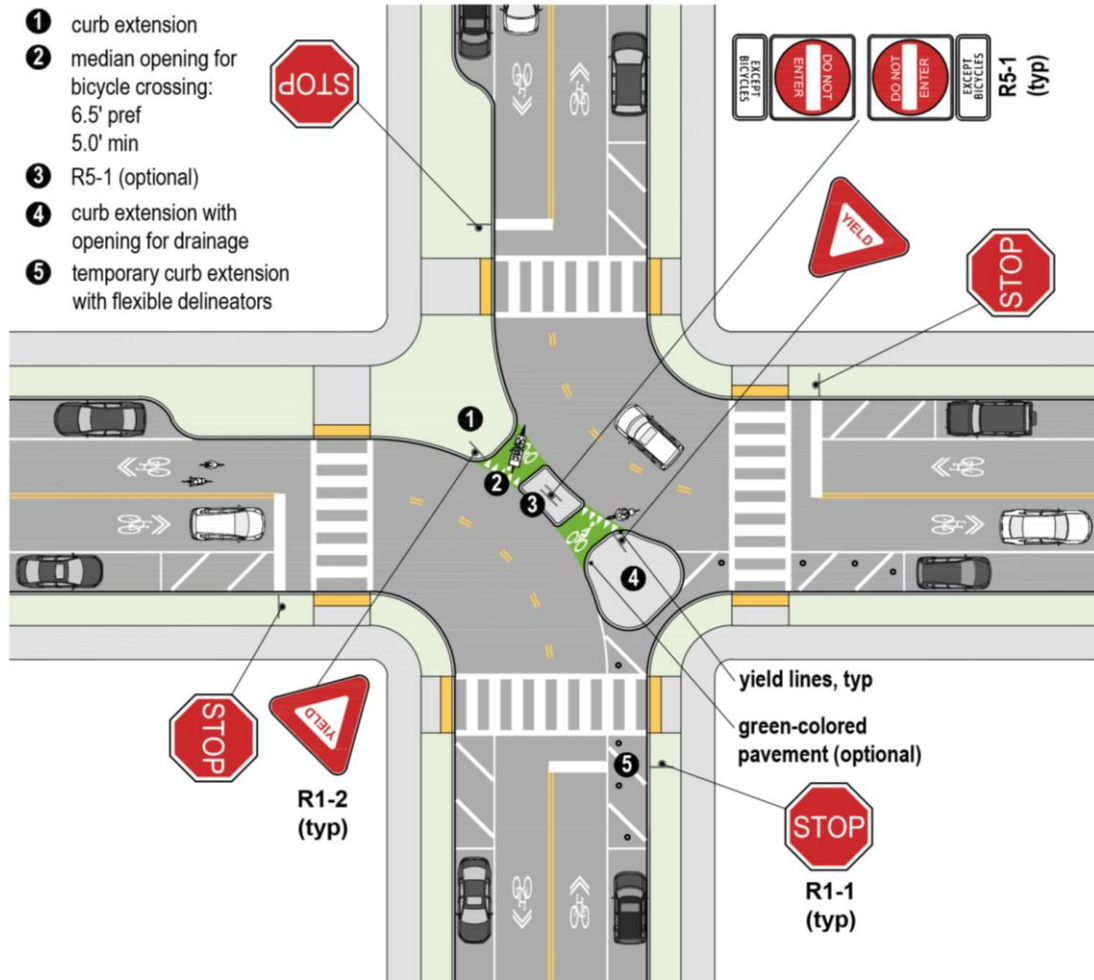
Adding on street parking

Introduction of bike lanes

Stormwater run-off mitigation

Routing Restriction/Traffic Diversion

- 1 curb extension
- 2 median opening for bicycle crossing: 6.5' pref 5.0' min
- 3 R5-1 (optional)
- 4 curb extension with opening for drainage
- 5 temporary curb extension with flexible delineators



Discussion



Discussion Questions

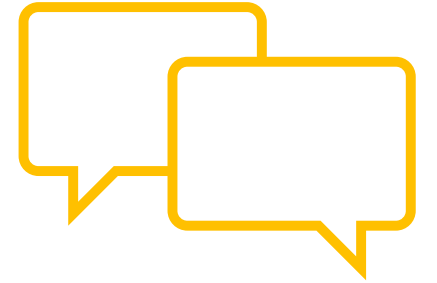
- Does anything surprise or concern you about the information we have presented?
- Are there any specific locations, incident types, or behaviors that either of you find especially concerning that are perhaps not captured?
- What do you believe is the most serious transportation issue in your community?
- What is the greatest challenge or the most significant barriers in your agency/organization to improving safety on the roads in your community? ...In the region, or more broadly?
- What makes the WestCOG region unique when it comes to the discussion of traffic calming?
- What treatments or designs have you seen work elsewhere, that you'd love/hate to see in the region?
- If you have a wish list of street interventions or policies that would be effective in supporting emergency professionals, what would be included? (Or – who is doing this well? Who and where can we learn from?)
- Do you have any specific concerns about the types of roadways and treatments that we've discussed?
- How can WestCOG and its agencies, specifically through design and operations, best support your work?

Next Steps



Miss anything?

Share your input and ideas with Mike at mwilson@westcog.org



- Thoughts, experiences, insights to consider in the project
- **Photos** of devices in use or on-site
- Referrals for **Responder Focus Groups**
- **Municipal materials** or guidance documents
- Other opportunities or projects related to the Toolbox...

Thank you

Questions? Contact:

Mike Wilson | mwilson@westcog.org

Carrie Long | clong@tooledesign.com