

WESTERN CONNECTICUT COUNCIL OF GOVERNMENTS

Traffic Calming and Complete Streets Best Practices Toolbox

Technical Advisory Group

September 9, 2025

Carrie Long, AICP
clong@tooledesign.com

Shawna Kitzman AICP, RSP1
skitzman@tooledesign.com



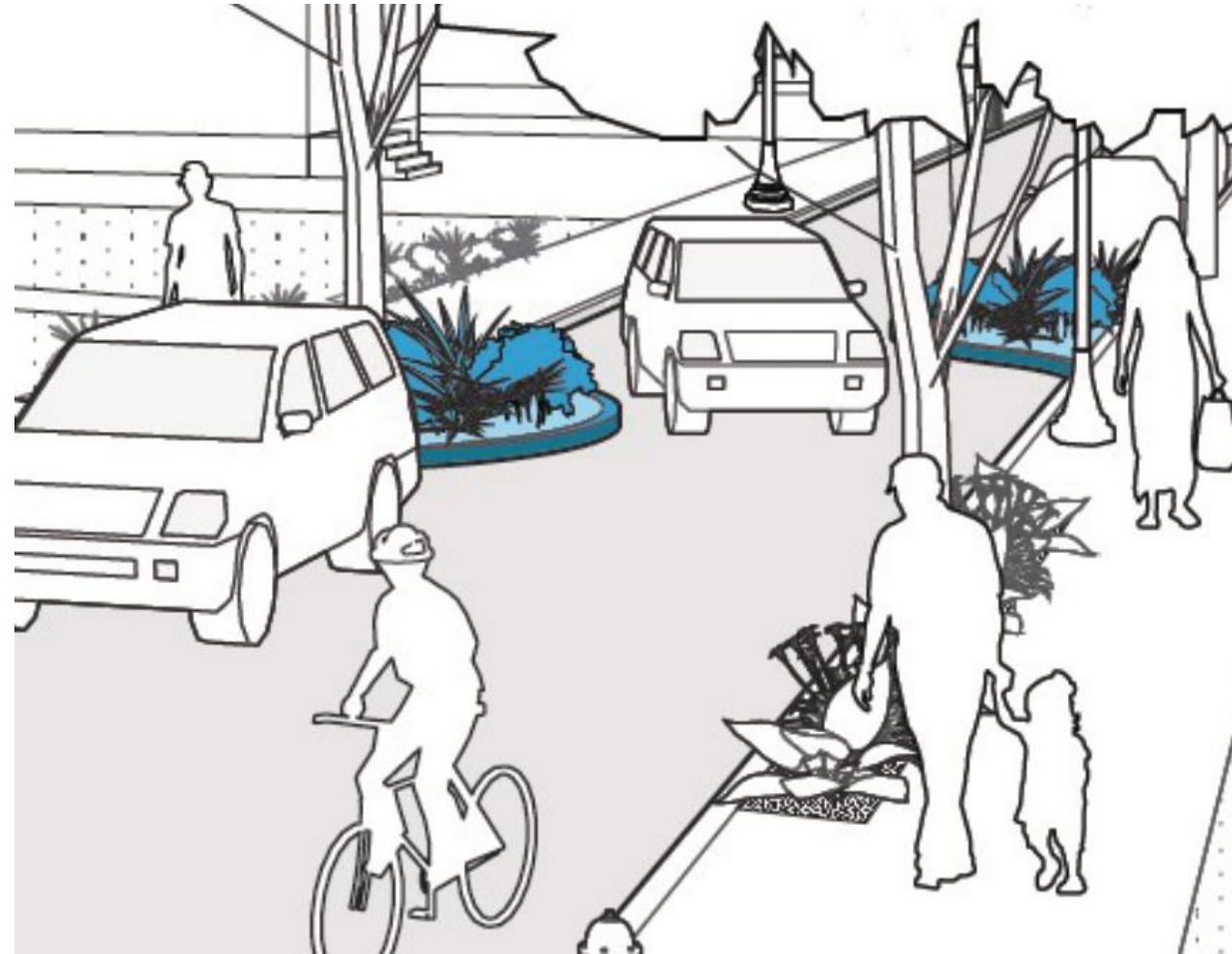
Agenda

- Project Overview and Work to Date
 - Regional Status Quo
 - Emergency Focus Groups
 - Best Practices Review
- The Toolbox
- Discussion and Q&A



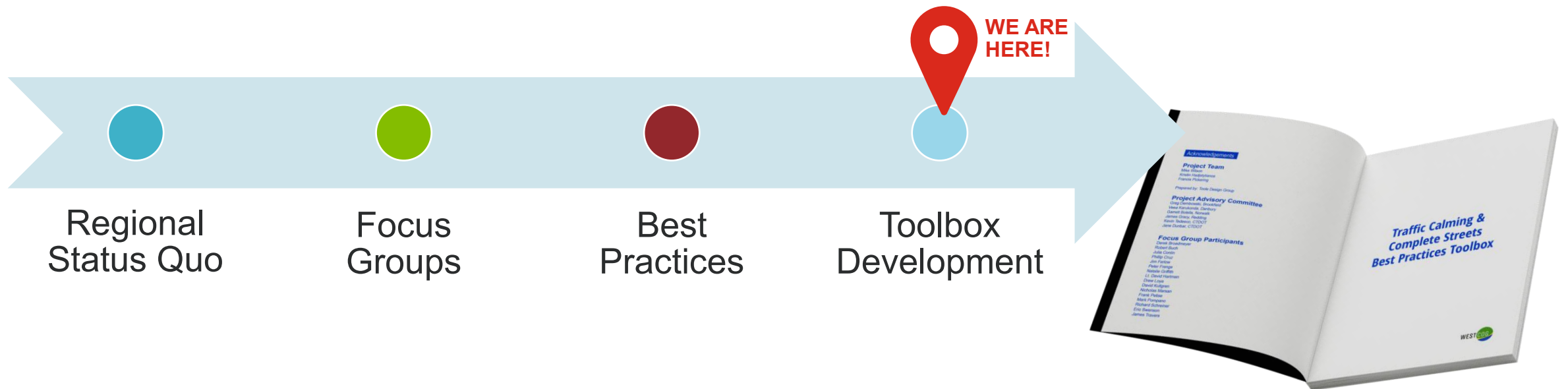
About the Toolbox

- The Traffic Calming and Complete Streets Best Practices Toolbox will provide **planning precepts** and **design principles** for **local and residential roads**



About the Toolbox

- Project Steps and Work to Date



Traffic Calming and Complete Streets Best Practices Toolbox

● Regional Status Quo

- Research and review of municipal guidance, manuals, and other resources
- Technical Memorandum



● **Regional Status Quo – Key Takeaways**

- 1. Advancing Traffic Calming and Complete Streets Initiatives**
 - Increase in local ordinances, toolkits, advisory committees, and campaigns
- 2. Realigning Intersections**
 - Reducing conflict with 90° turning movements, roundabouts, and daylighting
- 3. Expanding Pedestrian and Bicycle Infrastructure**
 - Addressing gaps in the sidewalk network and developing Bike/Ped Plans
- 4. Promoting Access Management**
 - Reviewing connectivity, circulation, driveway siting, and access to reduce curbcuts
- 5. Improving Parking Management**
 - Strategies to reduce parking: fee-in-lieu, incentives, and sharing arrangements

● Focus Groups

- Conducted two focus groups for **Emergency Service and Transportation Providers**
 - In-person Focus Group in Wilton, CT
 - Virtual Focus Group
 - 15 participants representing ten WestCOG municipalities
- Discussed operational needs and insights re: proposed traffic calming measures

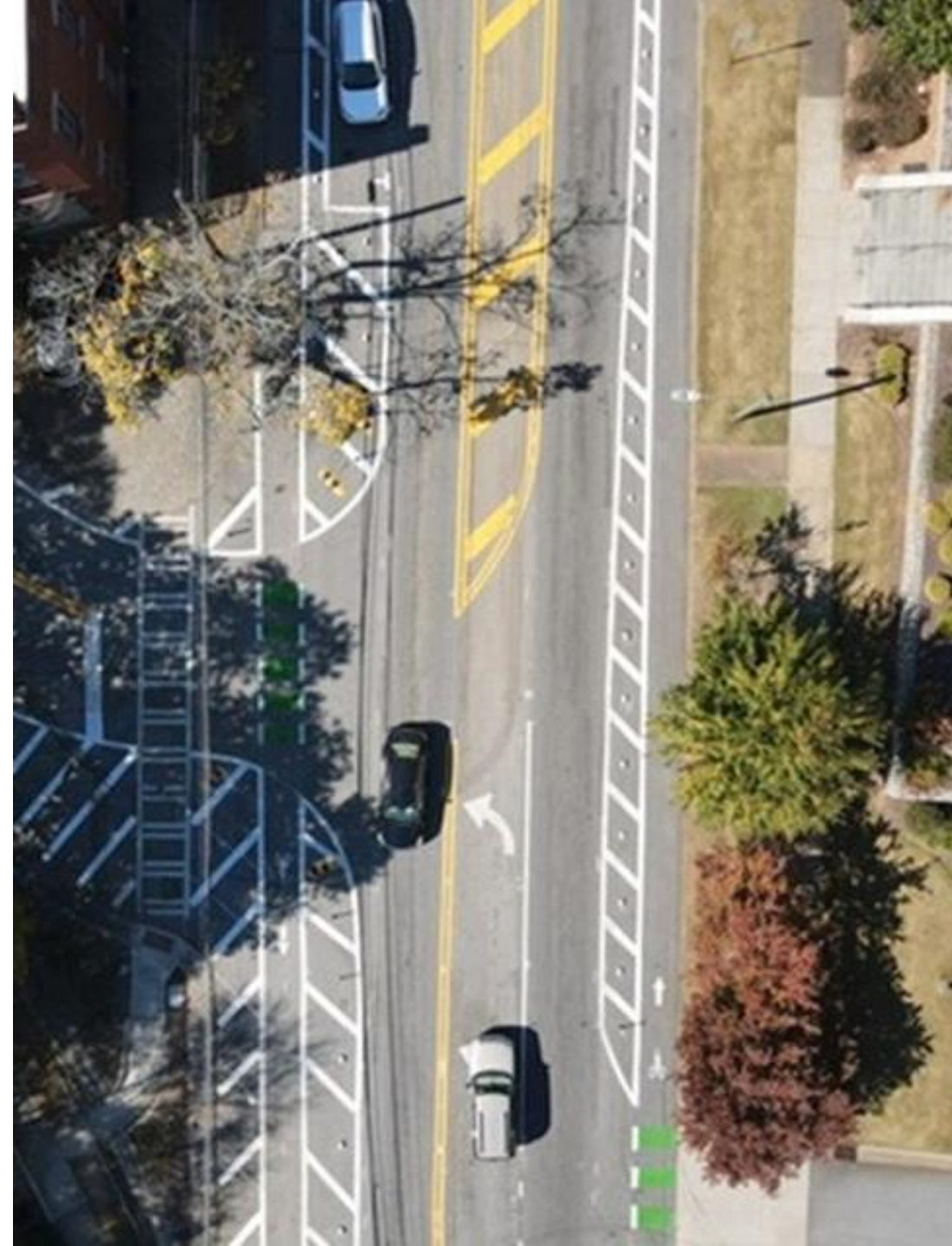


● Focus Groups – Key Takeaways

- 1. Challenges with Rerouting onto Local Roadways (e.g., Waze)**
 - Increased traffic, speeding, and safety issues
- 2. Specific Constraints with Legacy Networks**
 - Historic streets and narrow rural roadways; informal or natural traffic calming exists today
- 3. Preference for Raised Crosswalks**
 - More cost-effective with less impact on emergency response than other vertical measures
- 4. Coordinating Tools/Measures with Development**
 - Disconnect with gridded/cul de sac networks, including traffic calming in development code
- 5. Support for Education and (Automated) Enforcement Tools**
 - Addressing gaps in the sidewalk network and developing Bike/Ped Plans

● Best Practices

- Literature review of best practices in traffic calming and complete streets concepts
 - Will inform the measures and specifications included in the Toolbox
- Technical Memorandum



● Best Practices – Key Takeaways

1. Context-Sensitive Design is Fundamental

- Reflect the community's natural and built environment and local priorities

2. Expand and Connect the Active Transportation Network

- Demand for safer connections and networks, especially to key destinations

3. Transition Zones are a Safety and Placemaking Priority

- Alert drivers to new contexts and expectations (e.g., rural roads as main streets)

4. Evaluate Opportunities for Shared Spaces

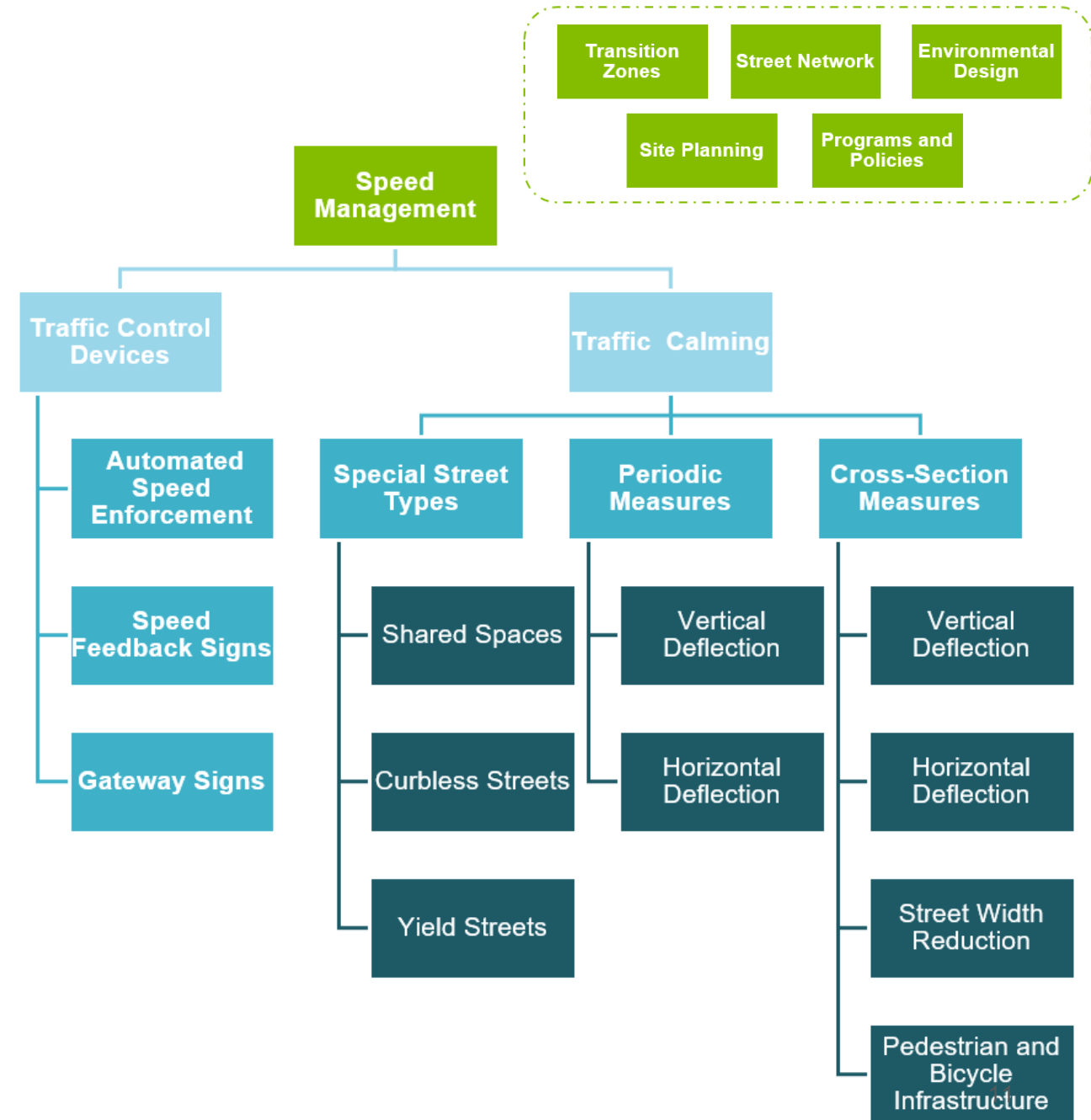
- All users share the right-of-way and the street can serve as a gathering space or paved yard

5. Promote Systemic Solutions vs. Spot Treatments

- Prioritization techniques and tools assess risk for higher-impact projects

The Toolbox

- Speed Management
 - Traffic Control Devices
 - Traffic Calming
- Transition Zones
- Street Network(s)
- Site Planning/Design
- Programs and Policies



Traffic Calming Measures: Types

Special Street Types

- Measures that **alter the surface of the street** such that it operates differently than other streets
- *Ex: Shared Spaces*



Periodic Measures

- Measures **placed intermittently** to reduce speed
- *Ex: Raised Crosswalks*



Cross-section Measures

- Measures **installed continuously** — they are part of the cross-section
- *Ex: Lane Reconfiguration*



Traffic Calming Measures

1. Vertical Deflection

- Slow motorists by changing the height of the roadway



2. Horizontal Deflection

- Slow motorists by preventing them from driving in a straight path



3. Width Reduction

- Narrow the width of the roadway causing motorists to slow down



4. Routing Restriction

- Restricting movements at intersections to reduce speed/volume



Raised Crossings and Intersections

Vertical Deflection, Periodic Measures



Mini-Roundabouts



Horizontal Deflection, Periodic Measures



Curb Extensions

Street Width Reduction, Cross-section Measures



Programs, Policies, and Site Planning

Transit
Oriented
Development

Parking
Reduction
Strategies

Safe Routes
to School

Streetscape
Improvement
Programs

Maintaining
the Rhythm
of Buildings

Green
Stormwater
Infrastructure

Street Trees
and
Landscaping

Developing the Toolbox

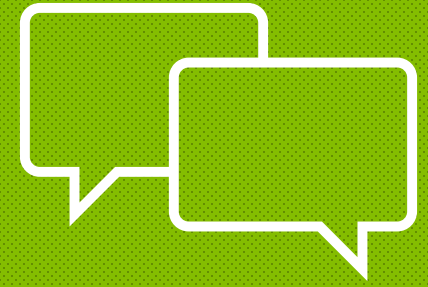
- Purpose and Description
- Cost and Timeline
- Suitability and Context
- Design Guidance
- Special Considerations (*Emergency Access, Transit, Stormwater*)
- Resources, Examples, Photos



Next Steps

- Thoughts, experiences, insights to consider in the project?
- Photos of devices in use or on-site in the region?
- Other opportunities or projects related to the Toolbox?

Share input with Mike: mwilson@westcog.org



**We want
to hear
from you!**

Thank you

Questions? Contact:

Mike Wilson | mwilson@westcog.org

Carrie Long | clong@tooledesign.com

Shawna Kitzman | skitzman@tooledesign.com