

# Sherman Center Connectivity Study Walk Audit

NOVEMBER 14<sup>TH</sup>, 2025



**SHERMAN**  
CONNECTICUT





---

# Agenda

- Introductions
- Study Overview
- Vision Statement
- Existing Conditions
- What is a Walk Audit?
- Purpose of the Audit
- What to Look For
- Safety Guidelines
- Logistics and Route
- Post-Walk Audit Discussion







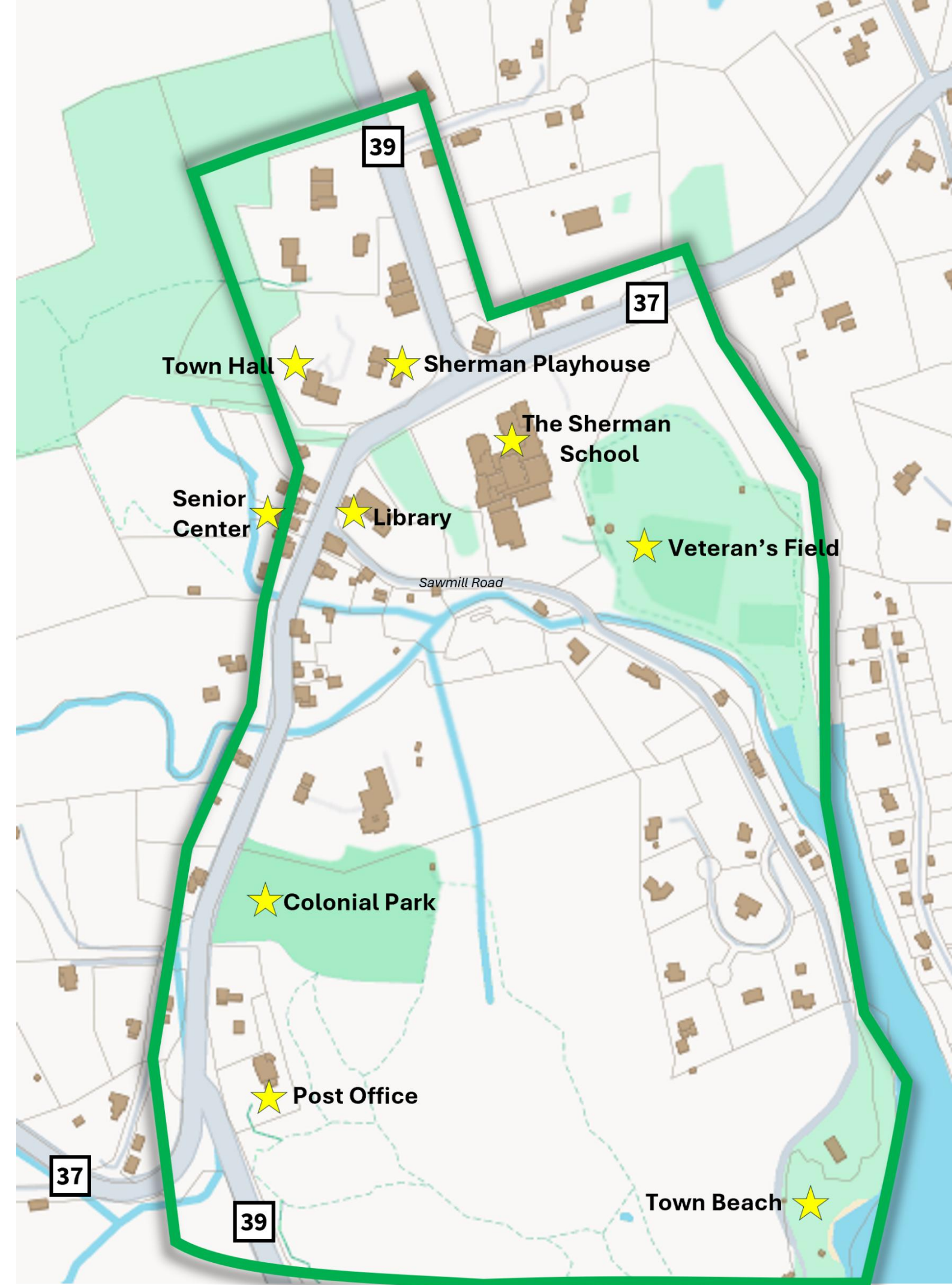
# Introductions

Please introduce yourself including your role, connection to Sherman or organization you are representing



# Study Overview

- Developing a transportation plan to improve mobility, safety, and accessibility in Sherman Center
- Identifying short- and long-term strategies and community-driven priorities
- Centered at CT Route 37 & 39 and The Sherman School Driveway
- Extends from Sherman IGA/Ridge Road to Town Beach, and from Veteran's Field to Colonial Park/Post Office



---

# Draft Vision Statement

*“Sherman Center will be a safe, walkable, and vibrant village that connects residents of all ages to school, parks, and community destinations through calm, attractive, and accessible streets and trails. Sherman Center’s historic and rural character will be preserved while enhancing opportunities for neighborly interaction, active mobility.”*

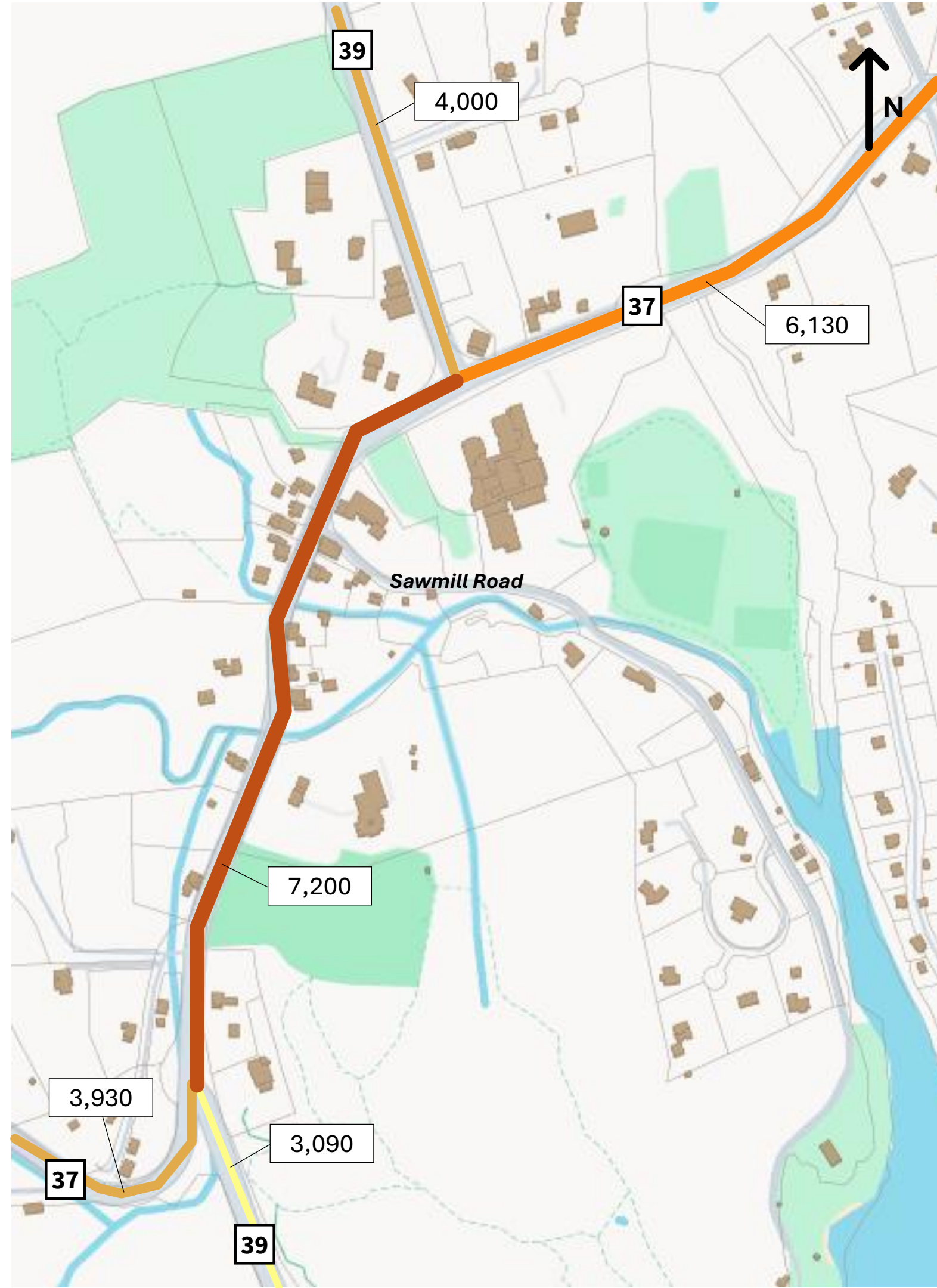




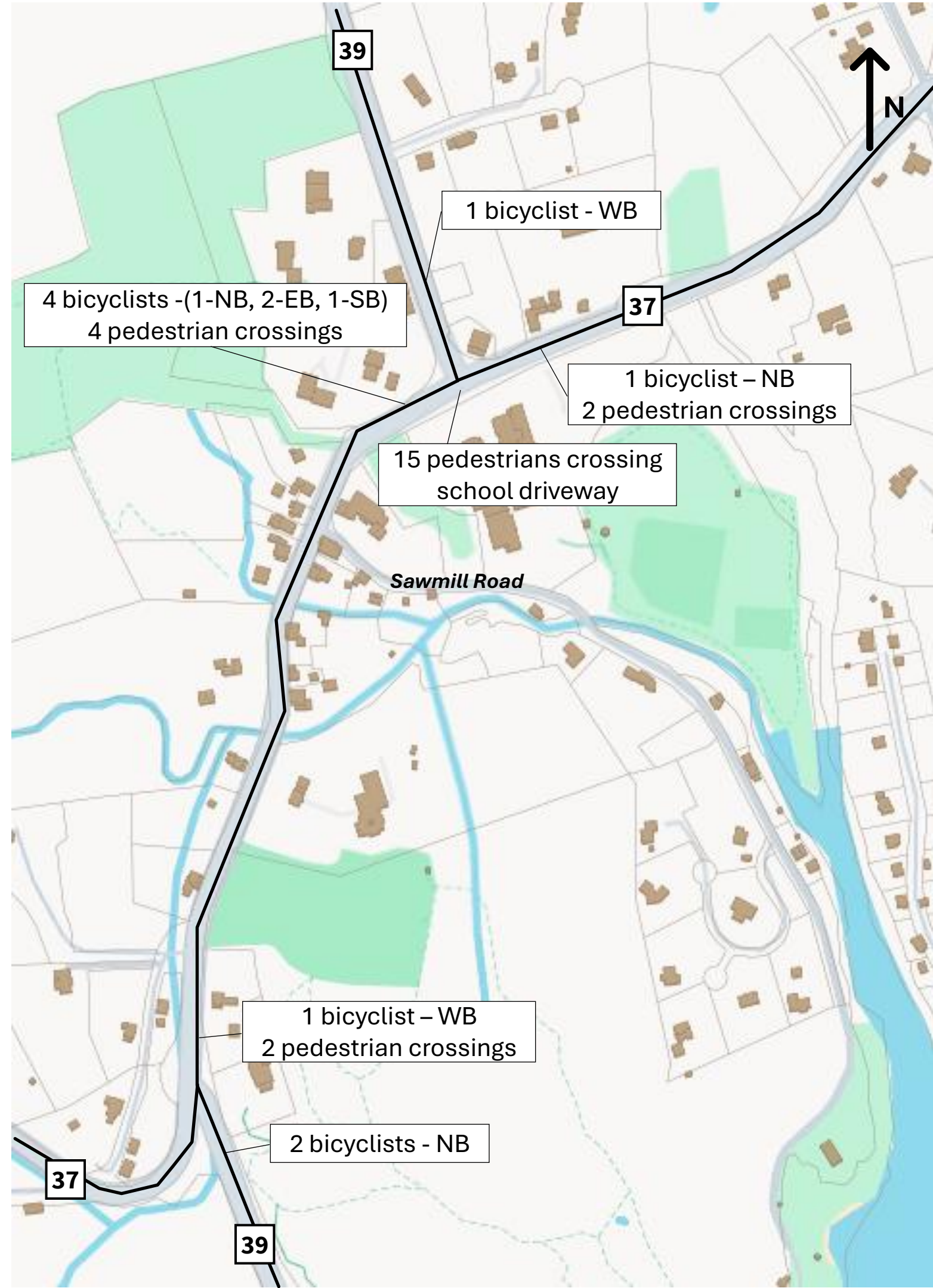
# Existing Conditions



# Traffic Volume - 10/1/2025



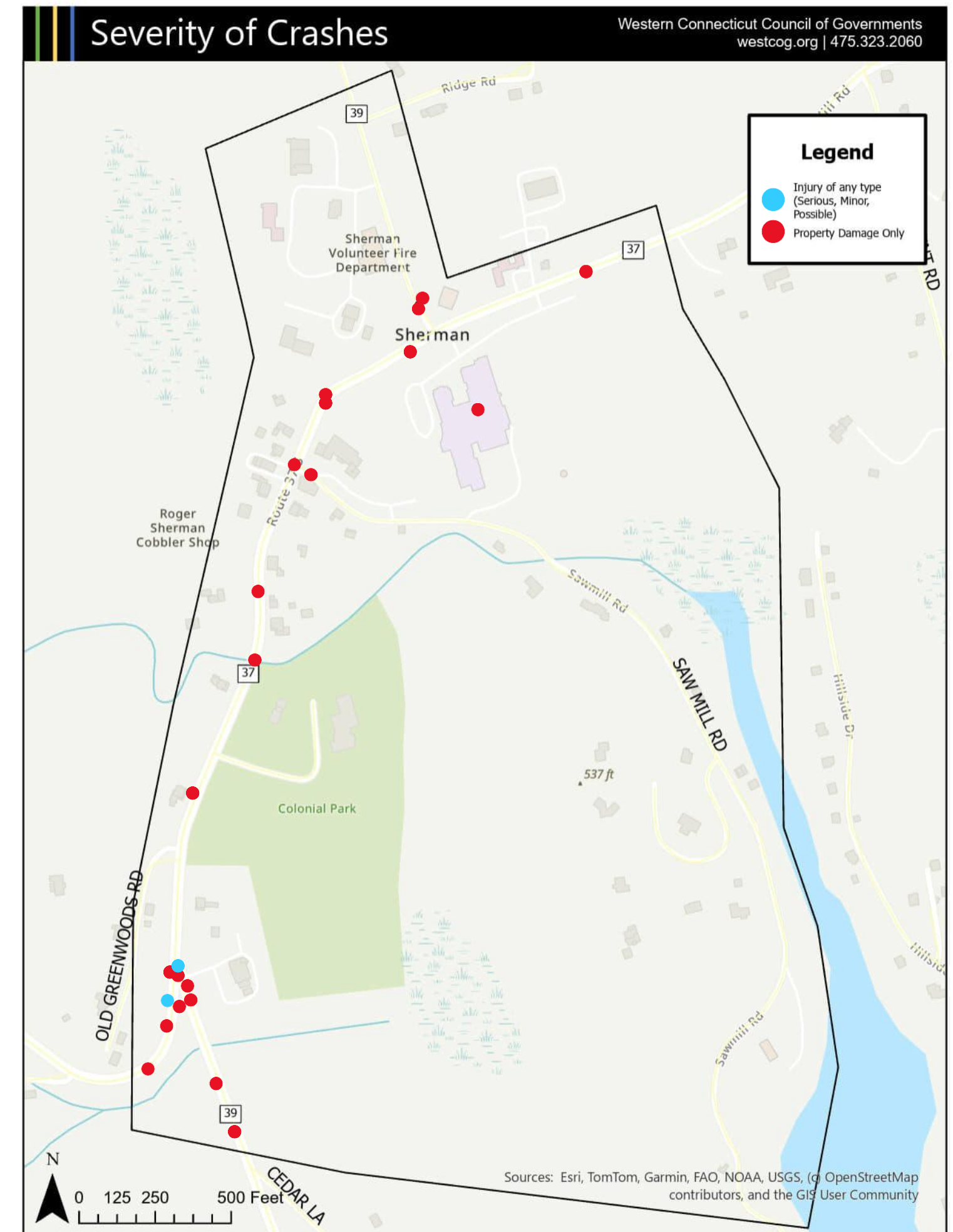
# Bike & Pedestrian Volume - 10/1/2025





# Crash History

- Between January 2020 to July 2025 – there were a total of 22 crashes
- Most crashes occurred during the daylight in clear, dry conditions
- Overall low volume of crashes but they are highly concentrated off the Route 37/39 Intersection near the American Pie Company
- Most crashes resulted in property damage only, with two leading to minor injuries





---

# What is a Walk Audit?

- They help a community identify and document walking and biking conditions and develop safety recommendations.
- Participants should look at the **safety, comfort, accessibility, and connectivity** for people of all ages and abilities.
- Observations should help shape future improvements and plans



---

# Purpose of the Audit

- To make walking safer, more comfortable, and more connected in Sherman
- To identify barriers and opportunities for better pedestrian connections between key destinations (schools, town center, parks, neighborhoods, shops, etc.)
- The walk audit provides on-the-ground community input
- Combined with data and mapping to guide future recommendations
- Helps set priorities for infrastructure improvement



---

# What to Look For

- The conditions (or lack) of sidewalks, streets, and crossings
- Who is using the street and why?
  - Observe how many people are walking
  - Take note of traffic flow, vehicle speed, etc.
- **Safety:** crossings, lighting, driver behavior
- **Comfort:** do people feel too exposed to traffic?
- **Accessibility:** sidewalk width, curb ramps, obstructions
- **Connectivity:** gaps, access to destinations



# Safety Guidelines

- Wear safety vest
- Stay aware of oncoming traffic and surroundings
- Stay off the road as much as possible

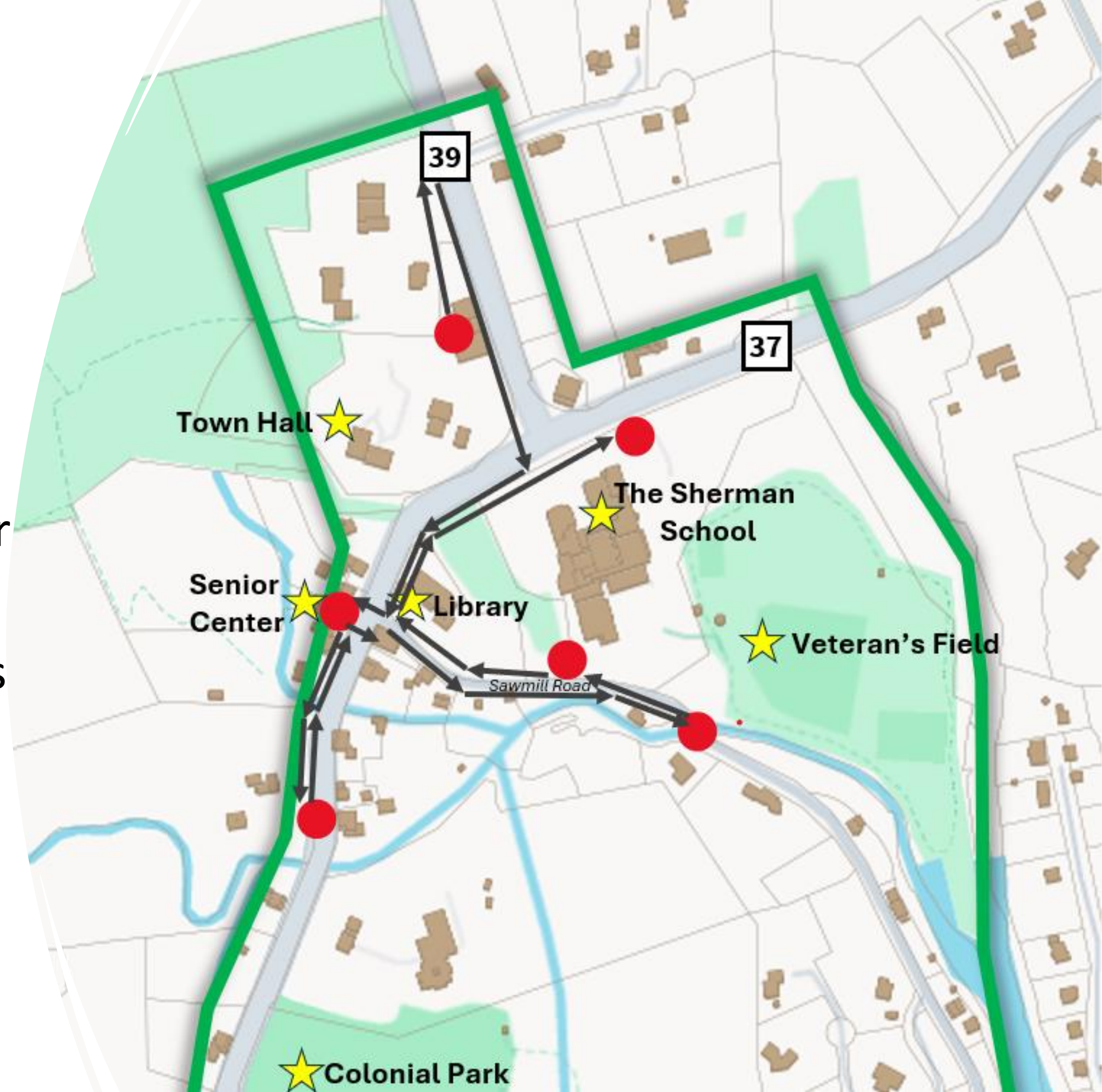




# Logistics & Route

Total estimated time: 1 hour

1. Charter Hall to the Senior Center
2. South down Route 37/39
3. Sawmill Road (towards Veteran's Field)
4. The Sherman School
  1. Back Entrance
  2. Front Entrance/Sacred Grounds





# — Post-Walk Discussion

- Debrief (~ 30 Minutes)
- Share highlights
- We will collect the forms and then compile the notes and observations
- Summary will feed into the Sherman Center Connectivity Study

