



NORWALK

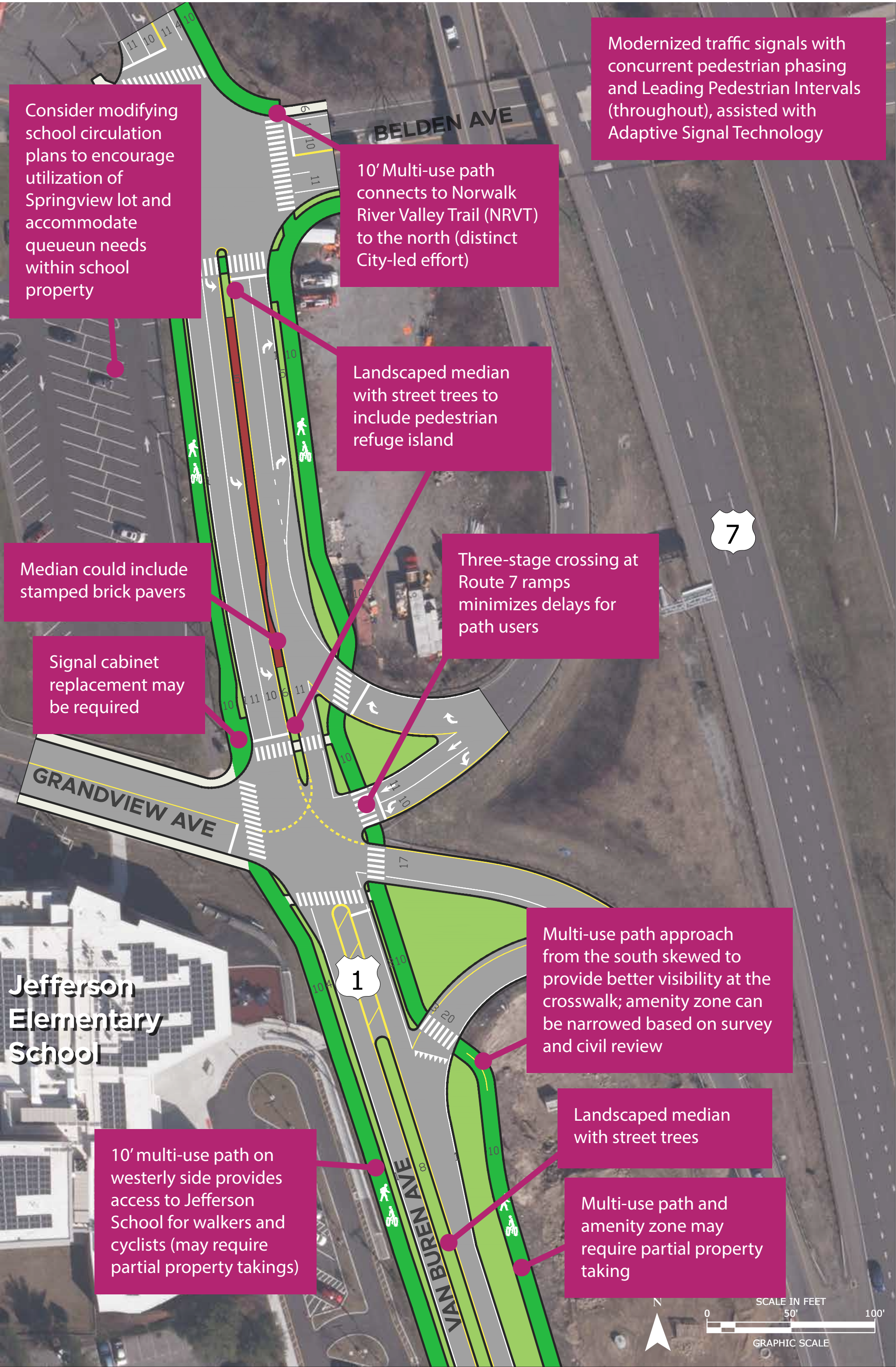
ROUTE 1 CORRIDOR

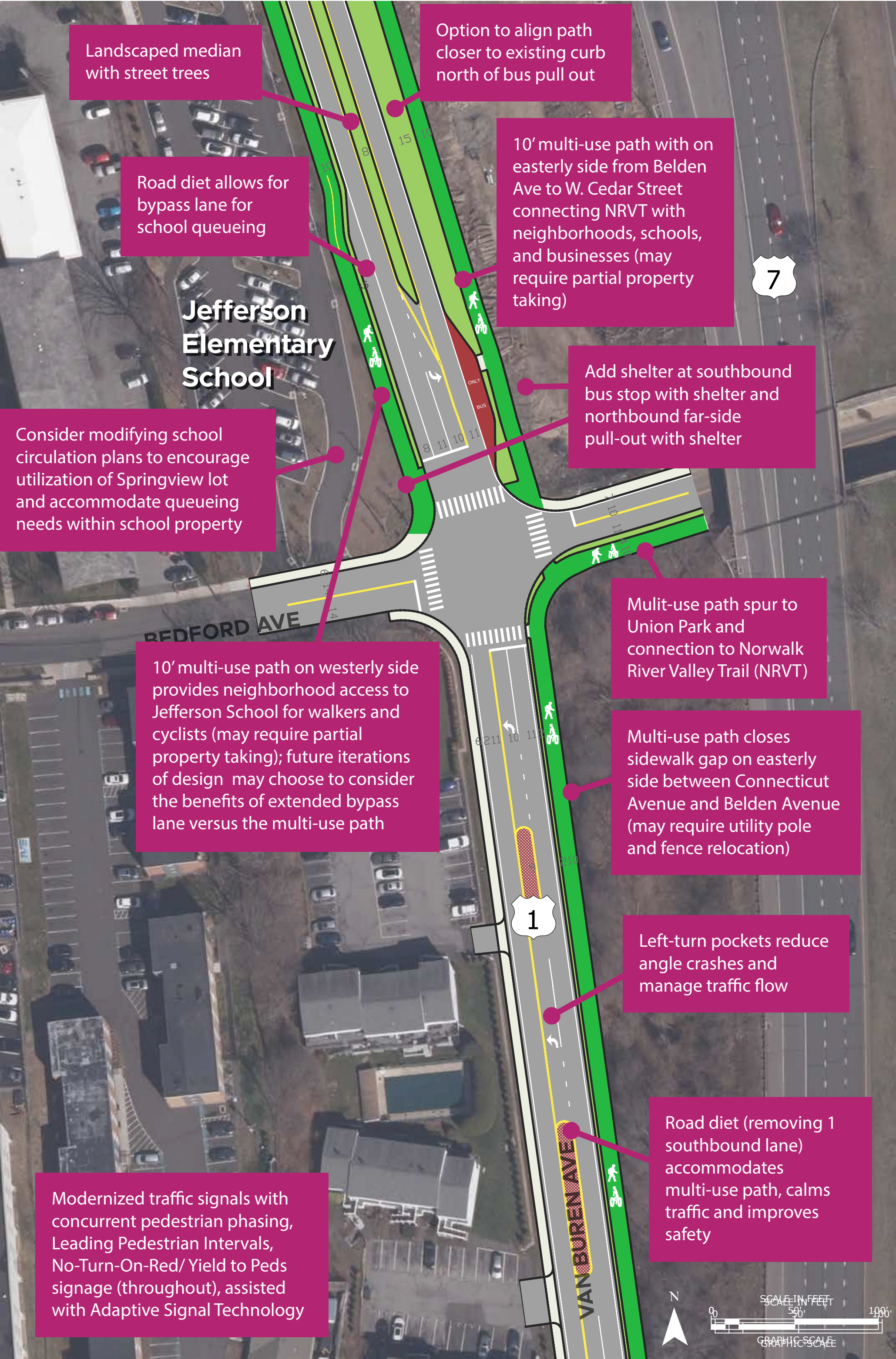
MASTER PLAN STUDY

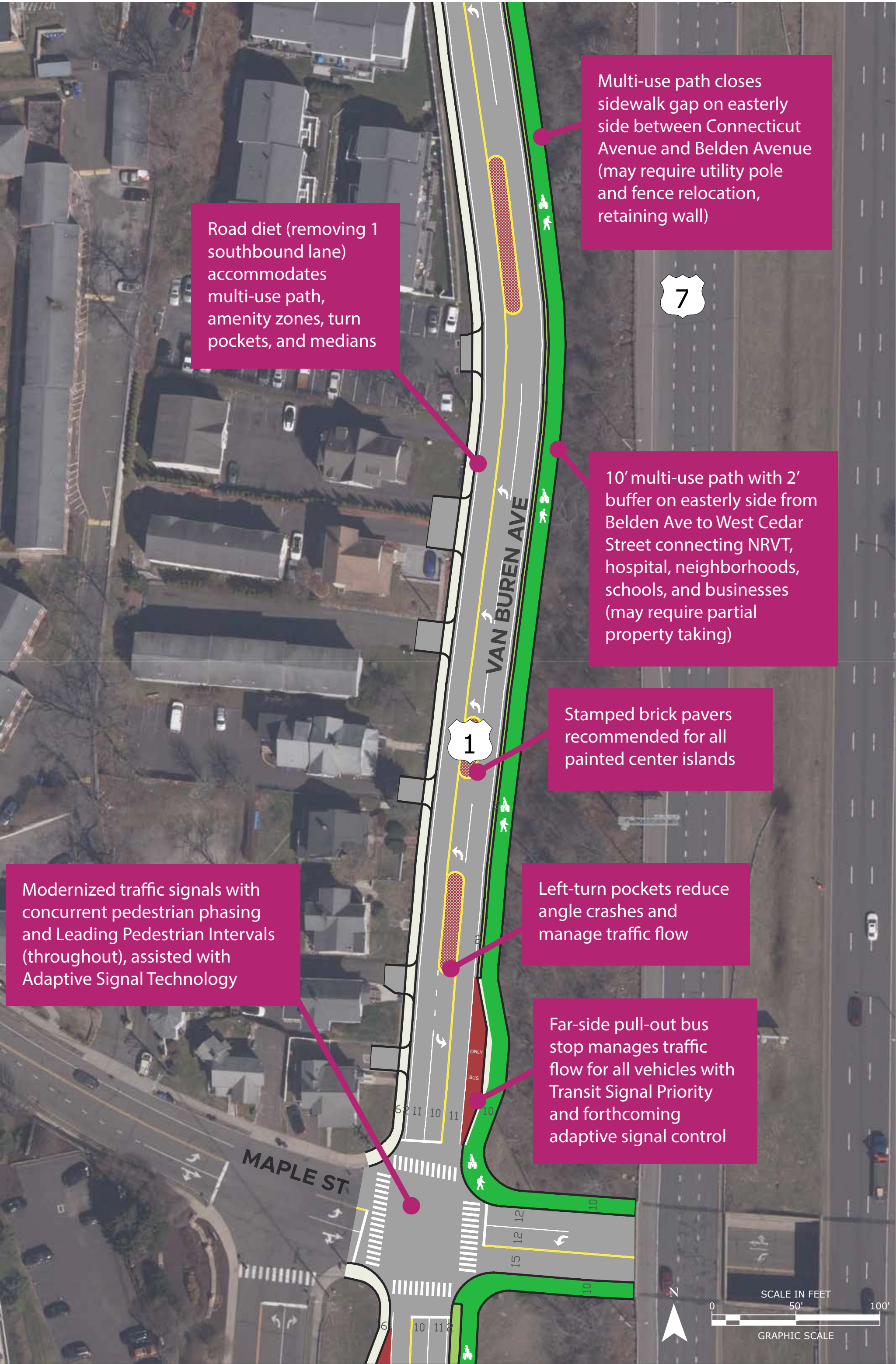
Connecticut Ave / Van Buren Ave

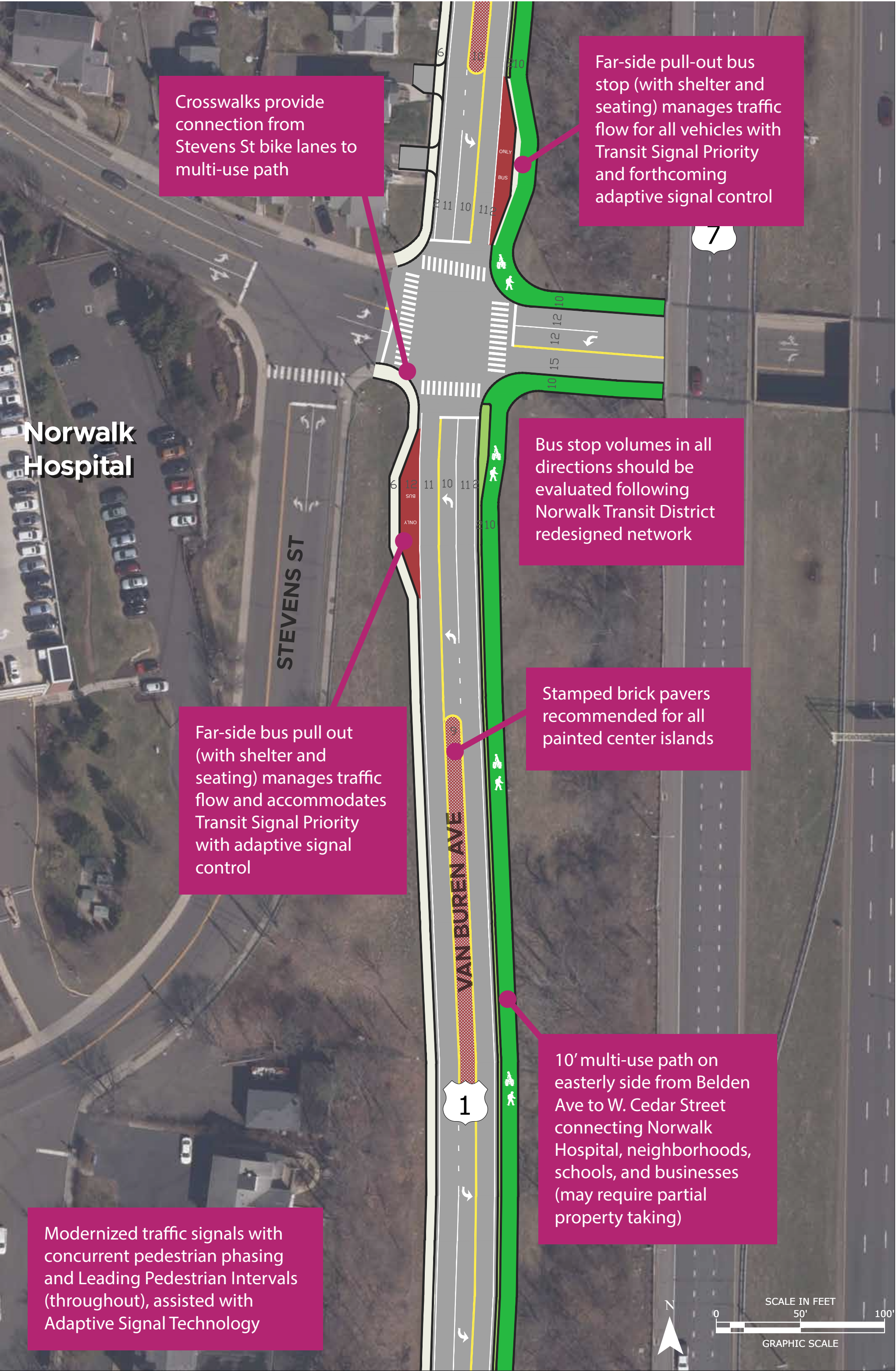
FINAL REPORT

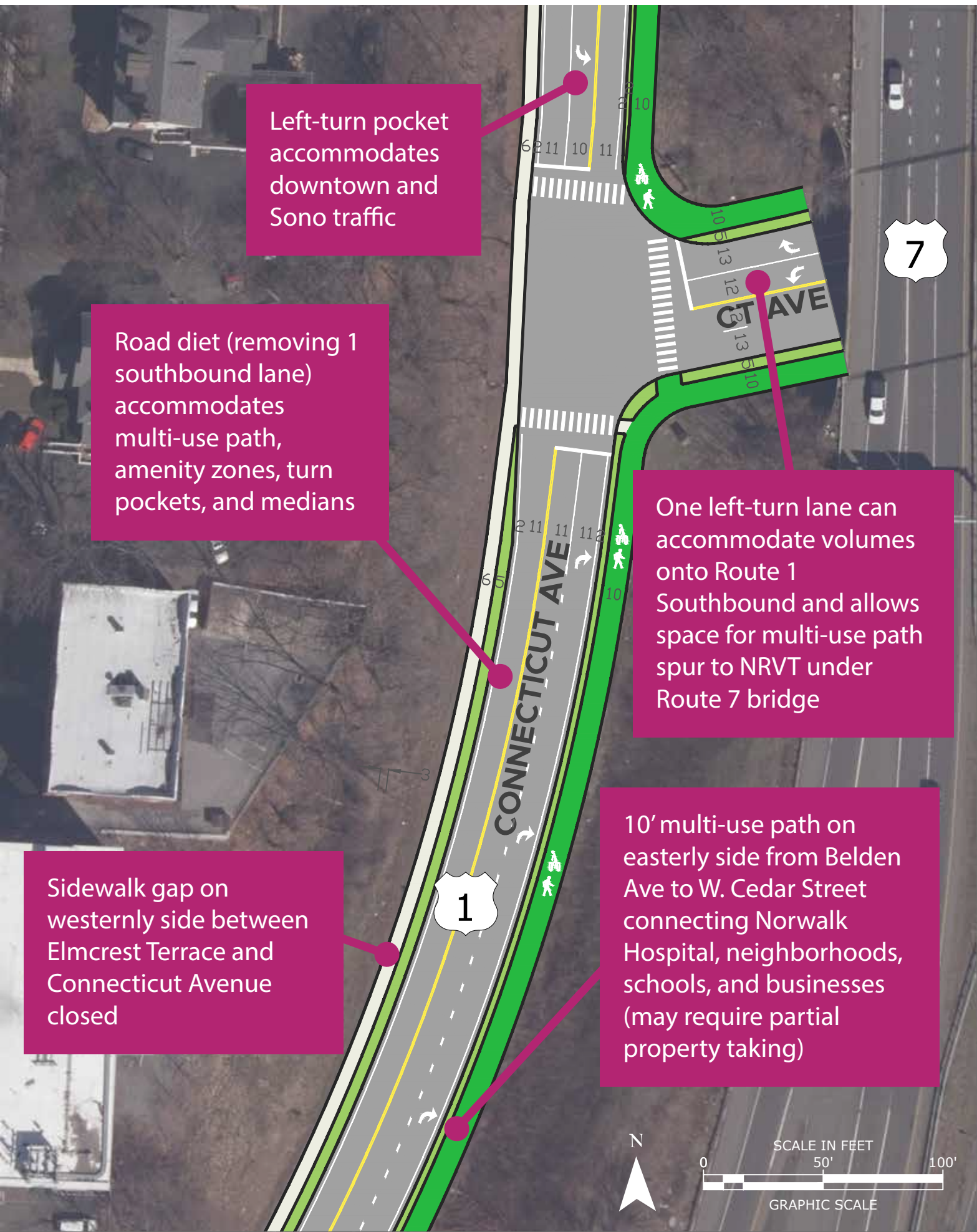
Appendix A Concept Plans

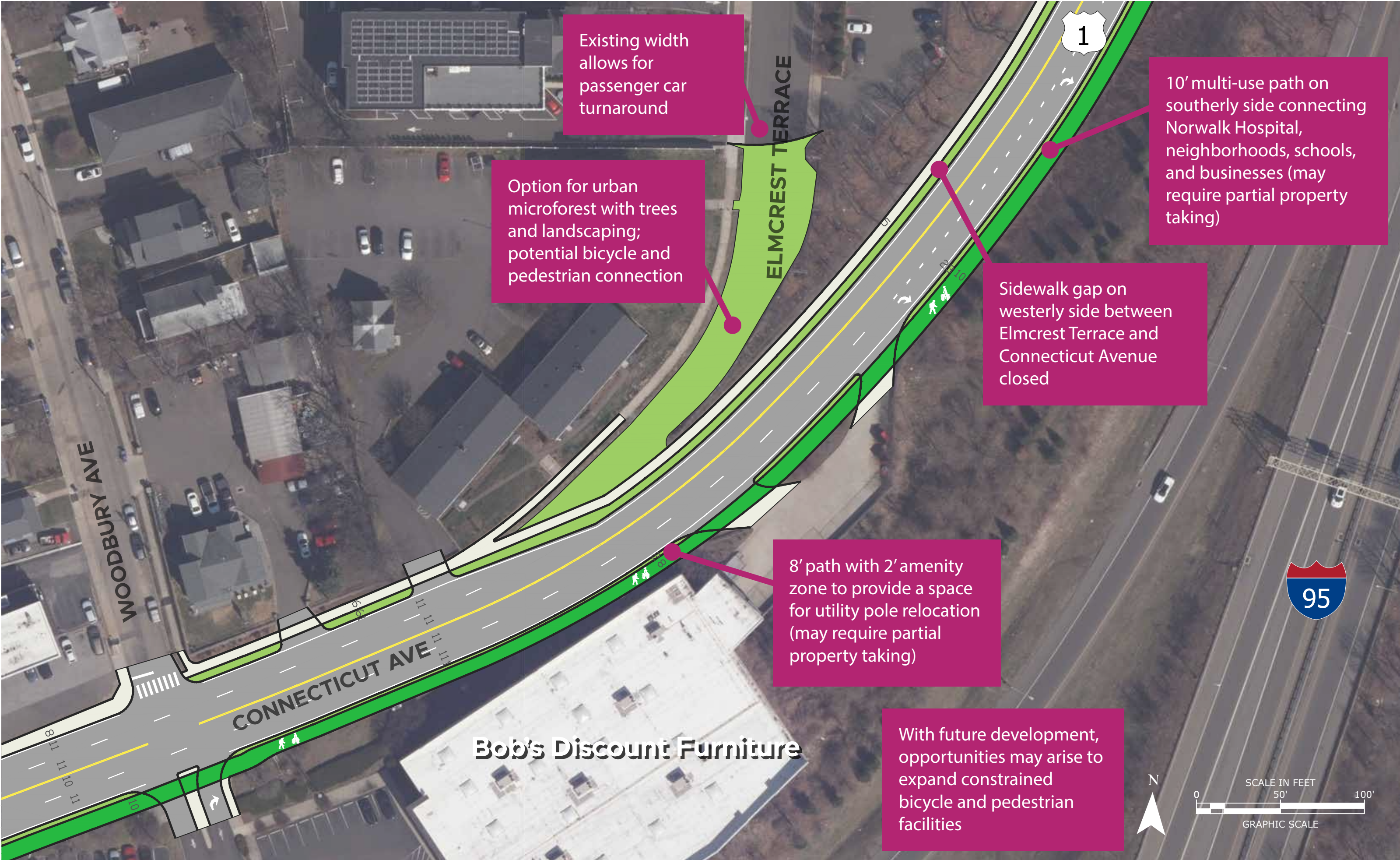


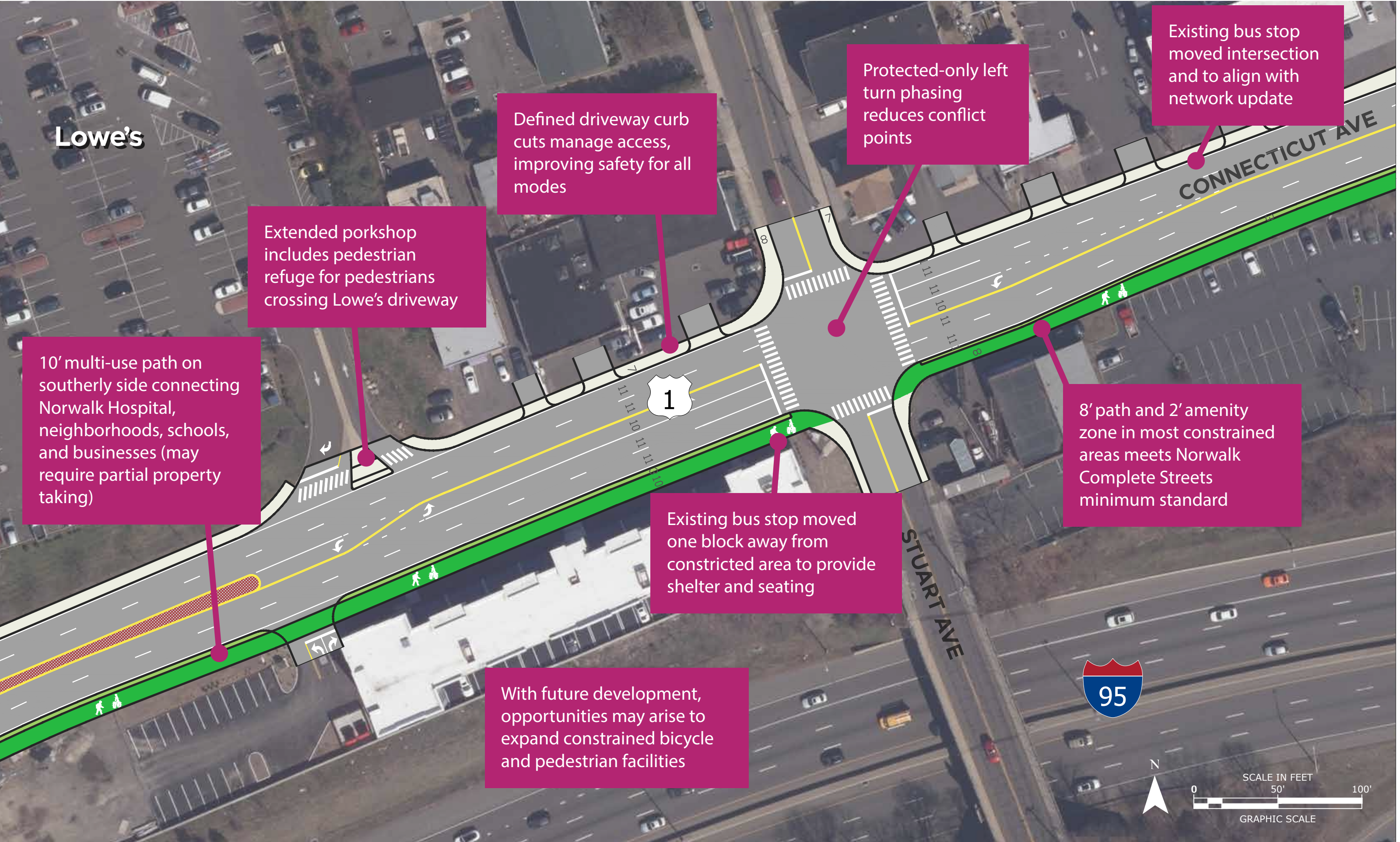


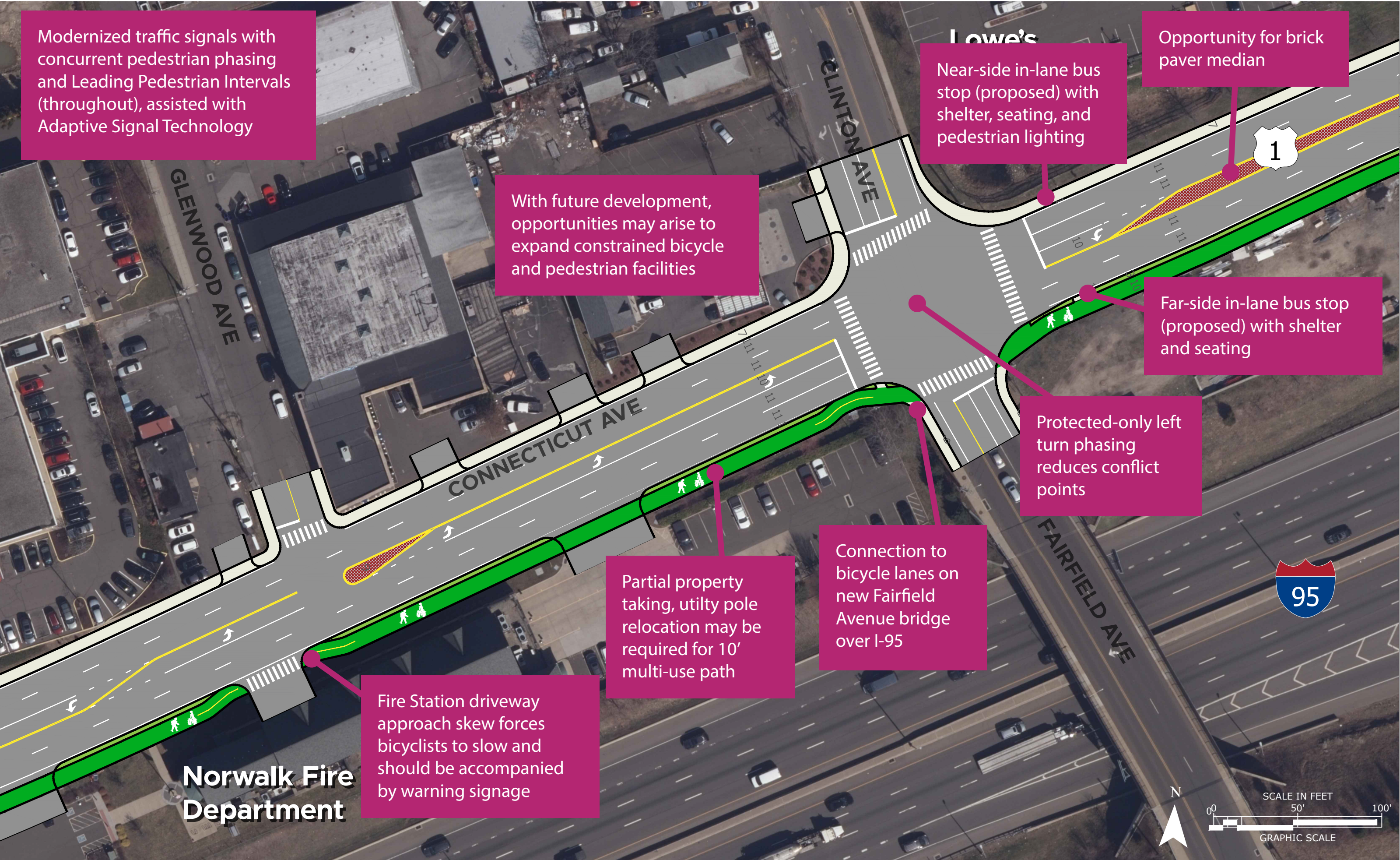


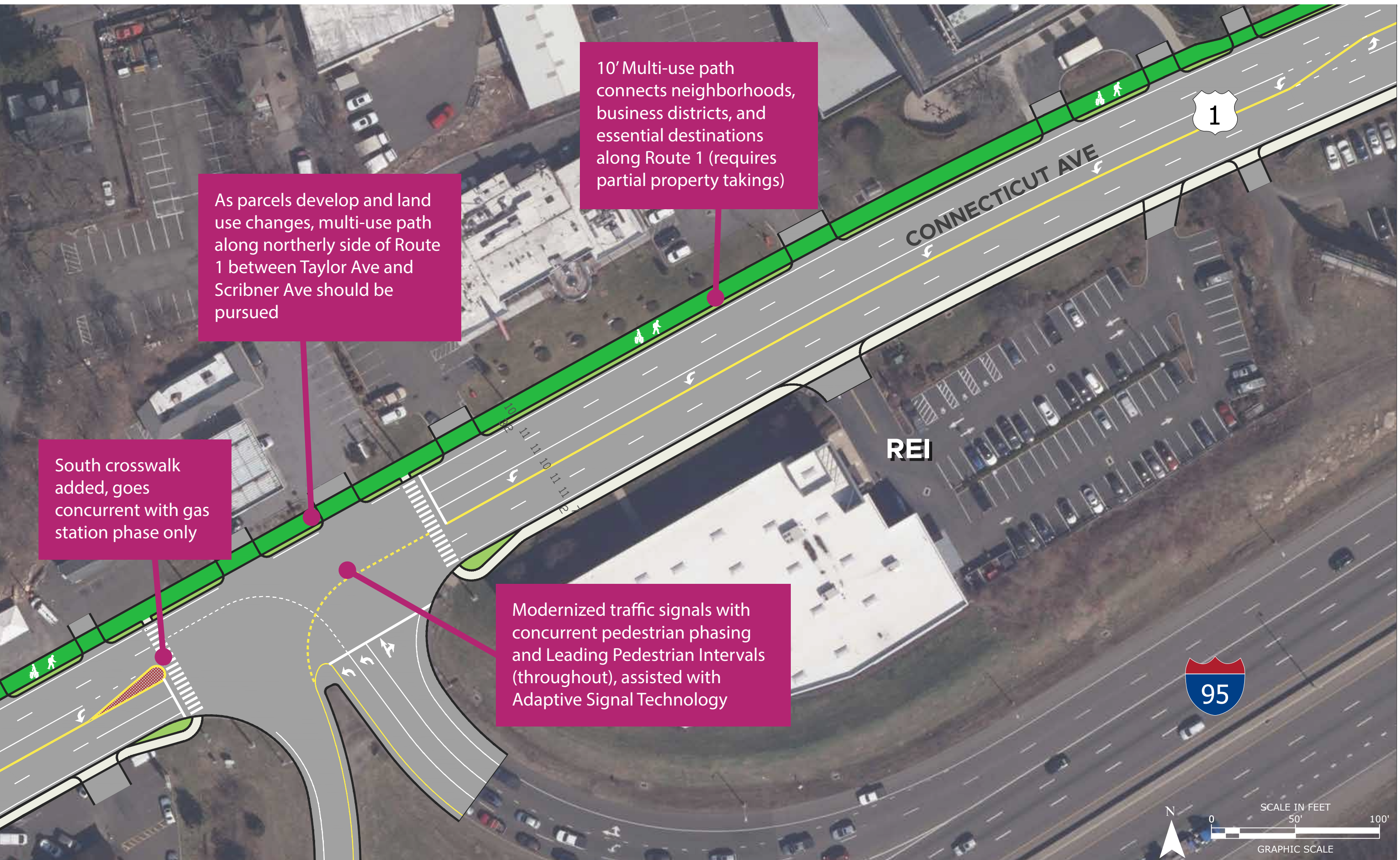


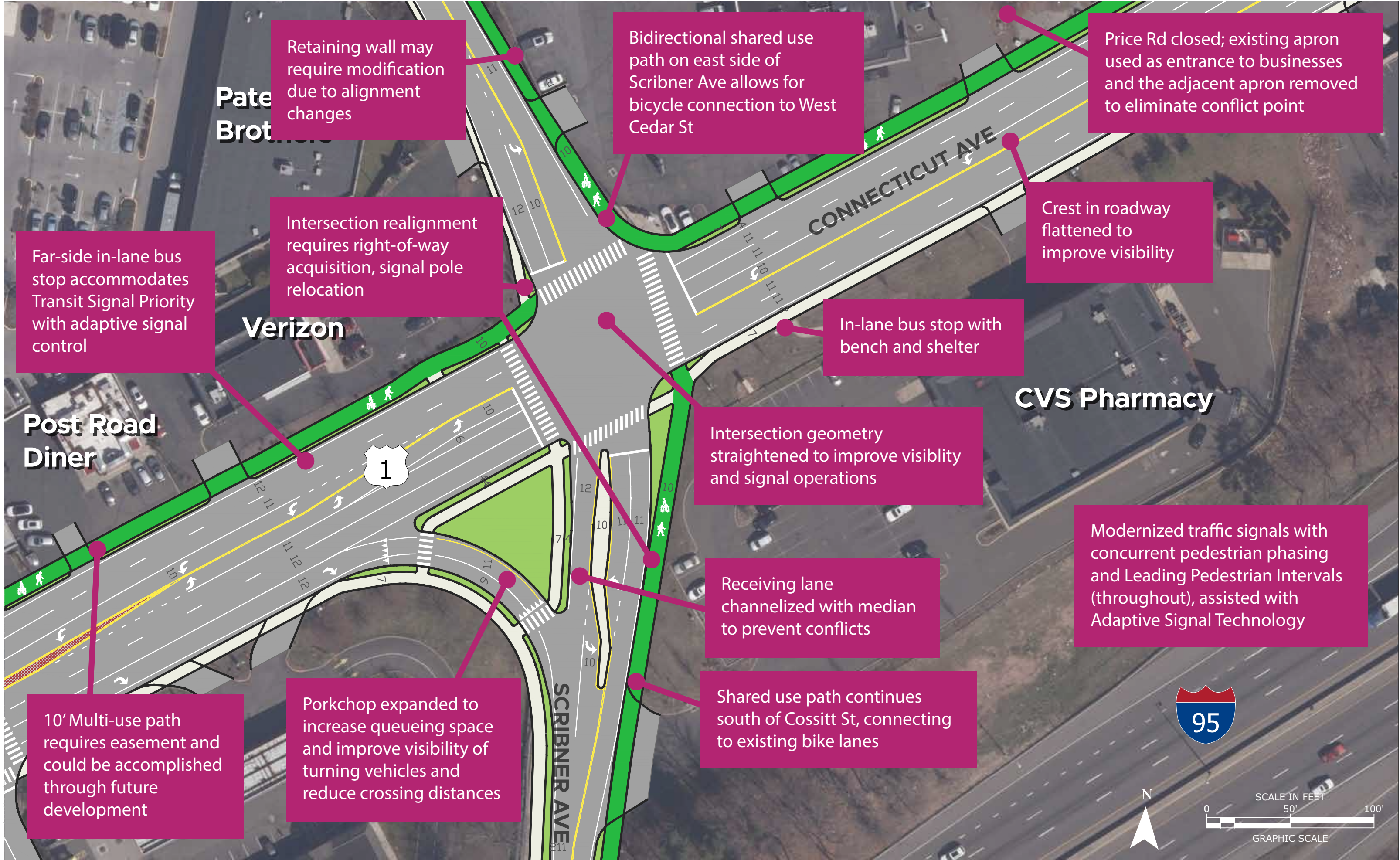




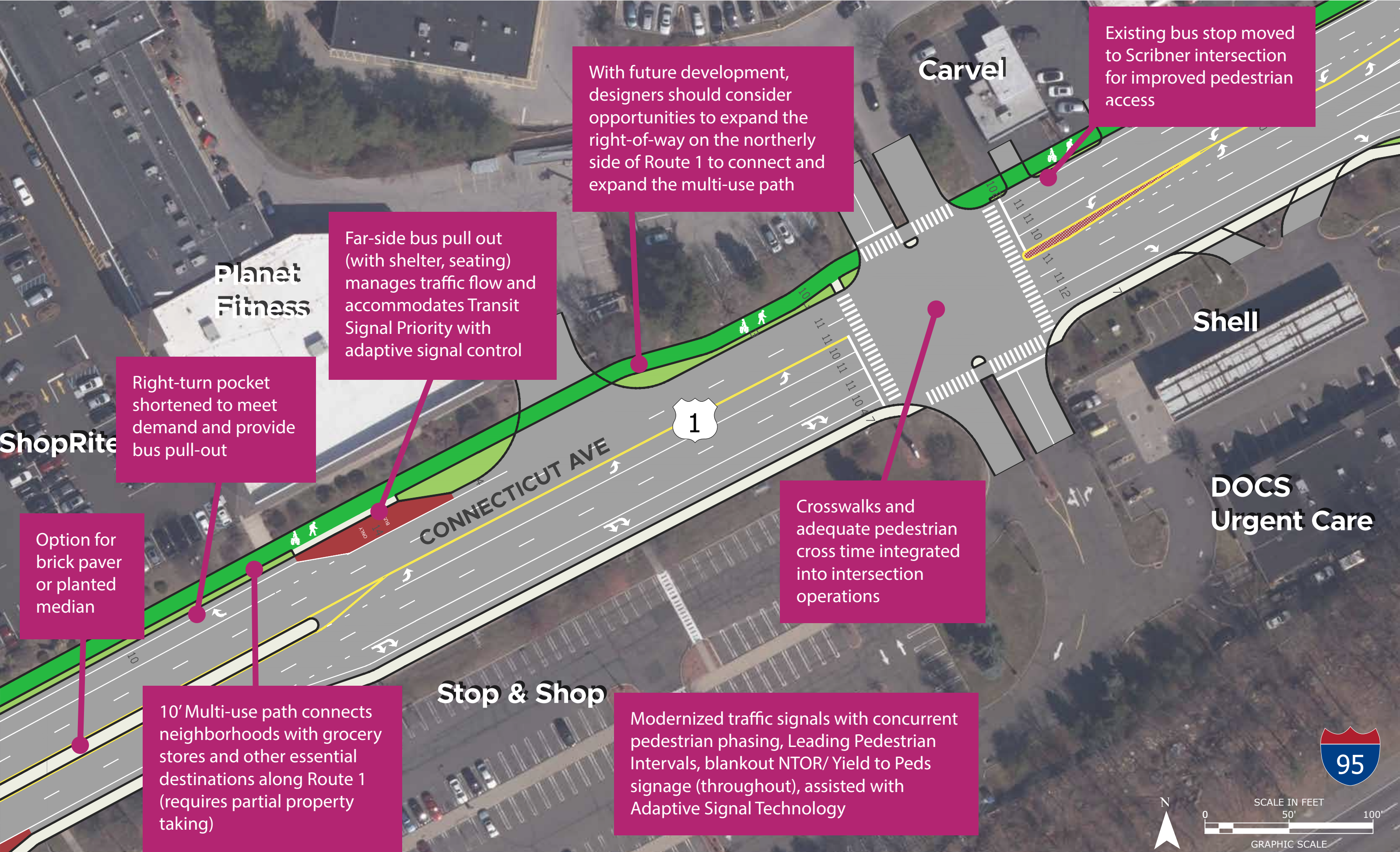












DICK'S Sporting Goods

Webster Bank

ShopRite

Option for brick pavers or planted median to be determined in future phases

Right-turn pocket shortened to meet demand and provide bus pull-out at stop (Sheet 13)

Path alignment requires utility pole and signal cabinet relocation at corner

Existing bus stop moved to ShopRite intersection for improved pedestrian access (w/ shelter, seating)

10' Multi-use path connects neighborhoods with grocery stores and other essential destinations along Route 1 (requires partial property taking)

Far-side bus pull-out (with shelter, seating, and pedestrian lighting) is closer to business entrance and reduces mid-block crossing at the bus stop

Crosswalks (with pedestrian-scale lighting) and adequate pedestrian cross time integrated into intersection operations

Protected-only Northbound left turn into ShopRite

Modernized traffic signals with concurrent pedestrian phasing, Leading Pedestrian Intervals, blankout NTOR/ Yield to Peds signage (throughout), assisted with Adaptive Signal Technology

Stop & Shop

